



# ILLNESS PREVENTION

**NEW** | 2021-2022

Identification Products  
for a Healthy Workplace



**Cover Coughs and Sneezes**  
Stop the spread of germs that can make you and others sick!

Cover your mouth and nose with a tissue when you sneeze or cough.

If you don't have a tissue, use your elbow.

Wash hands often, especially after coughing or sneezing.

OSHA CDC odc.gov/oregonhsu



**NOTICE**

**Hand sanitizer station.**



**NOTICE**

**FACE MASK REQUIRED BEYOND THIS POINT**

# Go Beyond Standard... CUSTOMIZE IT!

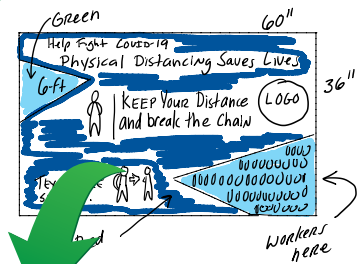
Whatever your regulations or standards, design products that meet **YOUR** needs, free of charge.

Choose from a range of quality materials sourced in the U.S.A., protected with our one of a kind Sign Muscle® coating to make it last.

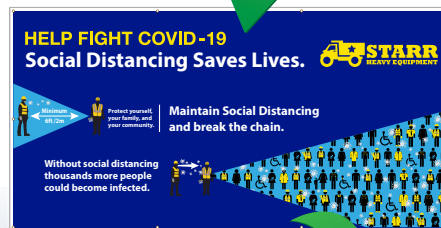
- No charge for artwork
- 2 Day turnaround time
- Made in the U.S.A.
- No minimums
- Free Sign Muscle® protective coating



## 1 FROM IDEA



## 2 TO PROOF



## 3 TO REALITY



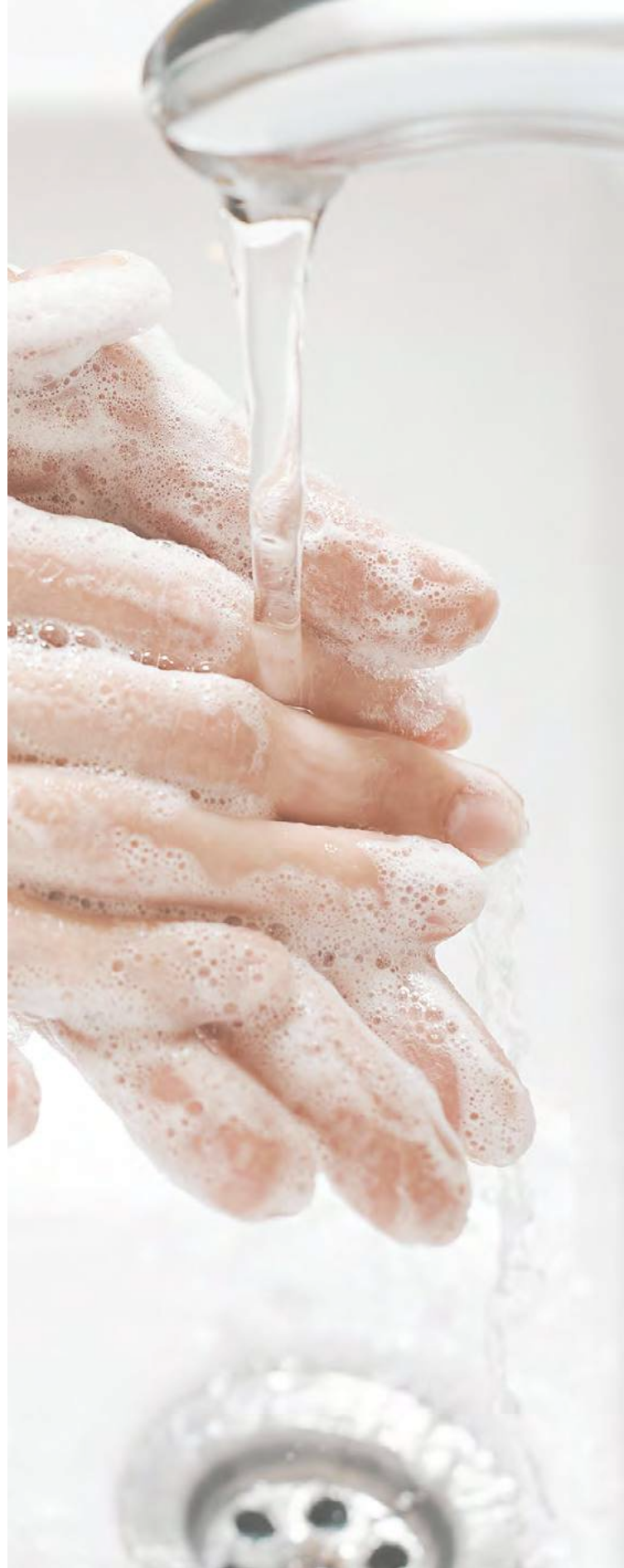
*Illness Prevention*

# STARTS HERE


Communicable illnesses are often transmitted in the workplace. This has to change. The main goal of any Illness Prevention Program is to prevent illnesses and deaths, the suffering these events cause workers, and the financial hardship they cause both workers and employers. Illness Prevention Programs can drastically reduce lost productivity, absenteeism and even fatality rates. Reinforce your Illness Prevention Program with our robust offering of identification products.


## Table of Contents:


Key Material Overview .....	4
Illness Prevention Signs .....	5-13
Illness Prevention Posters .....	14-21
Job Site/Facility Signs & Banners.....	22-25
Labels .....	26-30
Employee Health Check App .....	31
Screening Wristbands .....	32
Social Distancing Floor Markings/Floor Signs .....	33-41
Floor Marking Tapes & Shapes .....	42-43
Temporary Directional Signage.....	44-46
Work Station Virus Protection.....	47
Acrylic PPE Dispensers .....	48
Biohazard.....	49
Back to Work Kits.....	50-52




## Sign & Label Materials

 **Pressure Sensitive Vinyl (PSV):** Adhesive backed film for indoor/outdoor general-purpose signage. Flexible and durable allowing easy mounting to smooth, flat or curved surfaces. High-performance permanent adhesive bonds to ABS, acrylic, Formica, aluminum, stainless steel, HDPE, painted metal, styrene, painted non-vinyl wallboard, glass, and more.

 **Pressure Sensitive Removable Vinyl (PSVR):** All the same benefits as standard PSV but with a high-performance removable adhesive that offers clean removability for up to 180 days.

 **Rigid Plastic (RB):** Durable plastic material, ideal for long lasting indoor/outdoor use. Signs have rounded corners with four mounting holes. Protected by Sign Muscle® for easy removal of graffiti and image longevity.

 **Aluminum (AL):** Rust-proof, weatherproof, and non-corrosive, ideal for long term indoor or outdoor use. Signs have rounded corners with four mounting holes. Protected by Sign Muscle®, for easy removal of graffiti and image longevity.

## Poster Materials

**Heavy-Duty Poster Paper (HDP):** Synthetic paper material (with no pulp content) provides durability and excellent visibility with a professional finish.

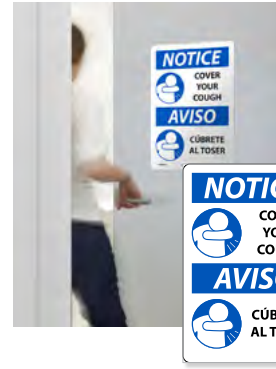
**Poster Paper (PP):** Light-duty, short-term solution when the need to convey an important message may be temporary.

## Banner Materials

**Banner:** Provides excellent long-term indoor use or short-term outdoor use. Reinforced, hot-welded edges with grommets allow for easy hanging. Flame resistant NFPA701.

**Mesh Banner:** Scrim mesh allows vibrant image with 37% airflow, making it ideal for fence wraps and outdoor messaging. Reinforced, hot-welded edges with grommets allow for easy hanging. Flame resistant NFPA701.

## Indoor



- Pressure Sensitive Vinyl
- Pressure Sensitive Removable Vinyl
- Rigid Plastic

## Outdoor



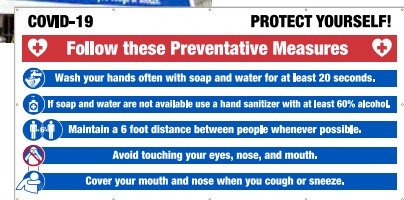
- ACP (see page 22)
- Aluminum
- Rigid Plastic

## Short Term Indoor



- Heavy-Duty Poster Paper
- Poster Paper

## Fence/Job-Site



- Banner
- Mesh Banner

# Signs

Post signs in your facility to convey the importance of hand-washing, social distancing, and face coverings to prevent spreading illness.

## Illness Prevention

**Bilingual**

AL 14 x 10 ESN535AB  
PSV 14 x 10 ESN535PB  
RB 14 x 10 ESN535RB

AL 14 x 10 N537AB  
PSV 14 x 10 N537PB  
RB 14 x 10 N537RB

AL 10 x 14 N535AB  
PSV 10 x 14 N535PB  
RB 10 x 14 N535RB

PSVR 14 x 10 M0139PBR  
RB 14 x 10 M0139RB

**Spanish**

PSVR 14 x 10 M0140PBR  
RB 14 x 10 M0140RB

AL 14 x 10 ESM631AB  
PSV 14 x 10 ESM631PB  
RB 14 x 10 ESM631RB

AL 10 x 14 M631AB  
PSV 10 x 14 M631PB  
RB 10 x 14 M631RB

PSVR 14 x 10 M0142PBR  
RB 14 x 10 M0142RB

**Spanish**

PSVR 14 x 10 M0142PBRSP  
RB 14 x 10 M0142RBSP

PSVR 14 x 10 M0141PBR  
RB 14 x 10 M0141RB

**Bilingual**

AL 10 x 14 M627AB  
PSV 10 x 14 M627PB  
RB 10 x 14 M627RB

MATERIALS
Pressure Sensitive Vinyl (PSV)
Pressure Sensitive Removable Vinyl (PSVR)
Rigid Plastic (RB)
Aluminum (AL)





## Hand Washing

**Bilingual**



AL 14 x 10 ESN536AB  
 PSV 14 x 10 ESN536PB  
 RB 14 x 10 ESN536RB



PSV 10 x 7 WH1P  
 PSV 14 x 10 WH1PB  
 PSVR 14 x 10 WH1PBR  
 PSVR 10 x 7 WH1PR  
 RB 14 x 10 WH1RB

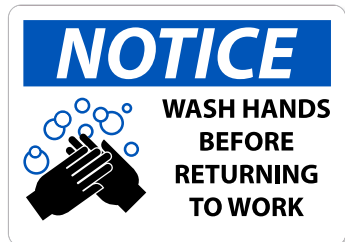


PSV 10 x 7 WH2P  
 PSV 14 x 10 WH2PB  
 PSVR 14 x 10 WH2PBR  
 PSVR 10 x 7 WH2PR  
 RB 14 x 10 WH2RB



PSV 14 x 10 N520PB  
 PSVR 14 x 10 N520PBR  
 RB 14 x 10 N520RB

**Spanish**



AL 10 x 14 N536AB  
 PSV 10 x 14 N536PB  
 RB 10 x 14 N536RB



AL 10 x 14 SPN536AB  
 PSV 10 x 14 SPN536PB  
 RB 10 x 14 SPN536RB



AL 10 x 14 N247AB  
 PSV 10 x 14 N247PB  
 RB 10 x 14 N247RB



AL 10 x 14 N43AB  
 PSV 10 x 14 N43PB  
 RB 10 x 14 N43RB

**Bilingual**



PSV 7 x 10 WH5P  
 PSV 10 x 14 WH5PB  
 PSVR 10 x 14 WH5PBR  
 PSVR 7 x 10 WH5PR  
 RB 10 x 14 WH5RB



PSV 7 x 10 WH6P  
 PSV 10 x 14 WH6PB  
 PSVR 10 x 14 WH6PBR  
 PSVR 7 x 10 WH6PR  
 RB 10 x 14 WH6RB

MATERIALS
Pressure Sensitive Vinyl (PSV)
Pressure Sensitive Removable Vinyl (PSVR)
Rigid Plastic (RB)
Aluminum (AL)



## Hand Washing



PSV 10 x 7 WH3P  
 PSV 14 x 10 WH3PB  
 PSVR 14 x 10 WH3PBR  
 PSVR 10 x 7 WH3PR  
 RB 14 x 10 WH3RB



PSV 10 x 7 WH4P  
 PSV 14 x 10 WH4PB  
 PSVR 14 x 10 WH4PBR  
 PSVR 10 x 7 WH4PR  
 RB 14 x 10 WH4RB

**Bilingual**



AL 14 x 10 ESWH4AB  
 PSV 14 x 10 ESWH4PB  
 RB 14 x 10 ESWH4RB



PSV 12 x 12 M623P  
 PBR 12 x 12 M623PR



PSV 12 x 12 M625P  
 PBR 12 x 12 M625PR

### MATERIALS

Pressure Sensitive Vinyl (PSV)
Pressure Sensitive Removable Vinyl (PSVR)
Rigid Plastic (RB)
Aluminum (AL)

# Mask & Face Covering Signage

Our expanded offering includes more bilingual messages.

**Don't see what you need?  
Contact us today!**

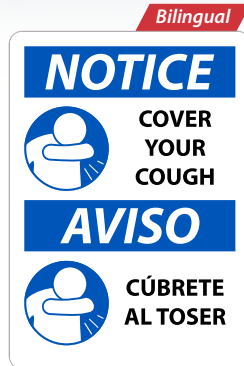
Eliminate questions on mask compliance. Our complete line of signage helps make your specific requirements clear.



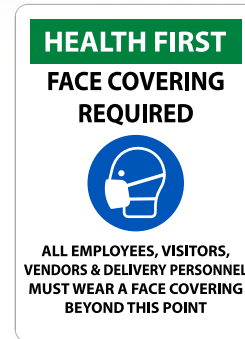
AL 14 x 10 NGA39AB  
PSV 14 x 10 NGA39PB  
RB 14 x 10 NGA39RB



AL 14 x 10 NGA46AB  
PSV 14 x 10 NGA46PB  
RB 14 x 10 NGA46RB



AL 14 x 10 ESN523AB  
PSV 14 x 10 ESN523PB  
RB 14 x 10 ESN523RB



AL 14 x 10 M632AB  
PSV 14 x 10 M632PB  
RB 14 x 10 M632RB



AL 10 x 14 N523AB  
PSV 10 x 14 N523PB  
RB 10 x 14 N523RB



AL 10 x 14 NGA47AB  
PSV 10 x 14 NGA47PB  
RB 10 x 14 NGA47RB



AL 10 x 14 ESNGA47AB  
PSV 10 x 14 ESNGA47PB  
RB 10 x 14 ESNGA47RB



AL 14 x 10 M638AB  
PSV 14 x 10 M638PB  
RB 14 x 10 M638RB

MATERIALS
Pressure Sensitive Vinyl (PSV)
Rigid Plastic (RB)
Aluminum (AL)





## Masks

Bilingual



AL 14 x 10 ESM630AB  
PSV 14 x 10 ESM630PB  
RB 14 x 10 ESM630RB



AL 14 x 10 M630AB  
PSV 14 x 10 M630PB  
RB 14 x 10 M630RB



AL 14 x 10 M614AB  
PSV 14 x 10 M614PB  
RB 14 x 10 M614RB



AL 14 x 10 M629AB  
PSV 14 x 10 M629PB  
RB 14 x 10 M629RB

Bilingual



AL 14 x 10 M633AB  
PSV 14 x 10 M633PB  
RB 14 x 10 M633RB



AL 10 x 7 M626BLA  
AL 14 x 10 M626BLAB  
PSV 10 x 7 M626BLP  
PSV 14 x 10 M626BLPB  
RB 10 x 7 M626BLR  
RB 14 x 10 M626BLRB



AL 10 x 7 M626GRA  
AL 14 x 10 M626GRAB  
PSV 10 x 7 M626GRP  
PSV 14 x 10 M626GRPB  
RB 10 x 7 M626GRR  
RB 14 x 10 M626GRRB



AL 10 x 7 M626RDA  
AL 14 x 10 M626RDAB  
PSV 10 x 7 M626RDP  
PSV 14 x 10 M626RDPB  
RB 10 x 7 M626RDR  
RB 14 x 10 M626RDRB

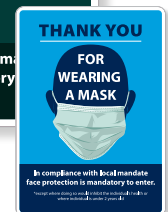
MATERIALS
Pressure Sensitive Vinyl (PSV)
Pressure Sensitive Removable Vinyl (PSVR)
Rigid Plastic (RB)
Aluminum (AL)

## GO CUSTOM

Use your logo, colors & copy



Your Sign



Original

**Social Distancing**



PSV 14 x 10 M615PB  
RB 14 x 10 M615RB



PSV 14 x 10 M616PB  
RB 14 x 10 M616RB



AL 10 x 14 NGA38AB  
PSV 10 x 14 NGA38PB  
RB 10 x 14 NGA38RB



PSVR 10 x 14 N521PBR  
RB 10 x 14 N521RB



AL 10 x 14 M617AB  
PSV 10 x 14 M617PB  
RB 10 x 14 M617RB



AL 10 x 14 M618AB  
PSV 10 x 14 M618PB  
RB 10 x 14 M618RB



AL 10 x 14 M619AB  
PSV 10 x 14 M619PB  
RB 10 x 14 M619RB



AL 10 x 14 M620AB  
PSV 10 x 14 M620PB  
RB 10 x 14 M620RB



AL 14 x 10 ESM619AB  
PSV 14 x 10 ESM619PB  
RB 14 x 10 ESM619RB



AL 14 x 10 ESM620AB  
PSV 14 x 10 ESM620PB  
RB 14 x 10 ESM620RB



AL 14 x 10 ESM636AB  
PSV 14 x 10 ESM636PB  
RB 14 x 10 ESM636RB



AL 10 x 14 M636AB  
PSV 10 x 14 M636PB  
RB 10 x 14 M636RB



PSVR 14 x 10 M0148PBR  
RB 14 x 10 M0148RB



PSVR 14 x 10 M0150PBR  
RB 14 x 10 M0150RB

MATERIALS
Pressure Sensitive Vinyl (PSV)
Pressure Sensitive Removable Vinyl (PSVR)
Rigid Plastic (RB)
Aluminum (AL)

Instructional

*Bilingual*



AL 14 x 10 ESN520AB  
PSVR 14 x 10 ESN520PBR  
RB 14 x 10 ESN520RB

*Spanish*



PSVR 10 x 14 SPNGA37PBR  
RB 10 x 14 SPNGA37RB



AL 10 x 14 NGA37AB  
PSVR 10 x 14 NGA37PBR  
RB 10 x 14 NGA37RB



PSVR 14 x 10 M0146PBR  
RB 14 x 10 M0146RB



PSV 10 x 14 N524PB  
RB 10 x 14 N524RB



PSV 7 x 10 N519P  
PSV 10 x 14 N519PB  
PSVR 10 x 14 N519PBR  
PSVR 7 x 10 N519PR



PSV 7 x 10 N518P  
PSV 10 x 14 N518PB  
PSVR 10 x 14 N518PBR  
PSVR 7 x 10 N518PR



PSVR 14 x 10 M611PBR  
RB 14 x 10 M611RB

*Bilingual*



AL 14 x 10 ESN519AB  
PSV 14 x 10 ESN519PB  
PSVR 14 x 10 ESN519PBR  
RB 14 x 10 ESN519RB

*Bilingual*



AL 14 x 10 ESN518AB  
PSV 14 x 10 ESN518PB  
PSVR 14 x 10 ESN518PBR  
RB 14 x 10 ESN518RB

*Bilingual*



AL 14 x 10 ESM637AB  
PSV 14 x 10 ESM637PB  
RB 14 x 10 ESM637RB

*Spanish*



PSVR 14 x 10 M0155PBRSP  
RB 14 x 10 M0155RBSP



PSVR 14 x 10 M0155PBR  
RB 14 x 10 M0155RB



PSV 10 x 14 M515PB  
RB 10 x 14 M515RB



PSV 10 x 14 M516PB  
RB 10 x 14 M516RB

MATERIALS
Pressure Sensitive Vinyl (PSV)
Pressure Sensitive Removable Vinyl (PSVR)
Rigid Plastic (RB)
Aluminum (AL)



## Temperature Check

Protect the health of employees and visitors with temperature check signs.

*Bilingual*

**TEMPERATURE CHECK STATION**  
 TEMPERATURE CHECK IS REQUIRED FOR ENTRY  
**ESTACIÓN DE CHEQUEO DE TEMPERATURA**  
 TOMARSE LA TEMPERATURA ES REQUERIDO PARA LA ENTRADA

AL 14 x 10 ESM634AB  
 PSV 14 x 10 ESM634PB  
 RB 14 x 10 ESM634RB

*Bilingual*

**NOTICE**  
 TEMPERATURE CHECK IS REQUIRED  
**AVISO**  
 SE REQUIERE CONTROL DE TEMPERATURA

AL 14 x 10 ESN522AB  
 PSV 14 x 10 ESN522PB  
 RB 14 x 10 ESN522RB

**TEMPERATURE CHECK STATION**  
 ALL EMPLOYEES ARE REQUIRED TO CHECK THEIR TEMPERATURE

AL 14 x 10 M612AB  
 PSV 14 x 10 M612PB  
 RB 14 x 10 M612RB

*Bilingual*

**TEMPERATURE CHECK STATION**  
**ESTACIÓN DE CHEQUEO DE TEMPERATURA**

AL 14 x 10 M635AB  
 PSV 14 x 10 M635PB  
 RB 14 x 10 M635RB

**VISITORS**  
 TEMPERATURE CHECK IS REQUIRED

PSV 14 x 10 M621PB  
 RB 14 x 10 M621RB

**ATTENTION**  
 PLEASE BE PREPARED TO HAVE YOUR TEMPERATURE CHECKED PRIOR TO ENTERING THE BUILDING

AL 10 x 14 M613AB  
 PSV 10 x 14 M613PB  
 RB 10 x 14 M613RB

**NOTICE**  
 TEMPERATURE CHECK IS REQUIRED

AL 10 x 14 N522AB  
 PSV 10 x 14 N522PB  
 RB 10 x 14 N522RB

MATERIALS
Pressure Sensitive Vinyl (PSV)
Rigid Plastic (RB)
Aluminum (AL)



## Room Occupancy



PSV 10 x 14 N525PB  
RB 10 x 14 N525RB



PSV 10 x 14 N526PB  
RB 10 x 14 N526RB



PSV 10 x 14 N527PB  
RB 10 x 14 N527RB



PSV 10 x 14 N528PB  
RB 10 x 14 N528RB



PSV 10 x 14 N529PB  
RB 10 x 14 N529RB



PSV 10 x 14 N530PB  
RB 10 x 14 N530RB



PSV 10 x 14 N531PB  
RB 10 x 14 N531RB



PSV 10 x 14 N532PB  
RB 10 x 14 N532RB



PSV 10 x 14 N533PB  
RB 10 x 14 N533RB



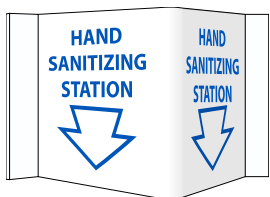
PSV 10 x 14 N534PB  
RB 10 x 14 N534RB



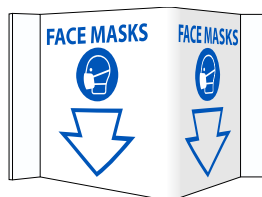
AL 14 x 10 M628AB  
PSV 14 x 10 M628PB  
RB 14 x 10 M628RB

MATERIALS
Pressure Sensitive Vinyl (PSV)
Rigid Plastic (RB)
Aluminum (AL)

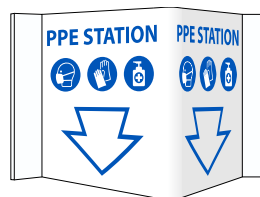
## 3D Wall Signs



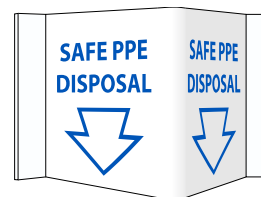
VS54



VS55



VS56



VS57



DESCRIPTION  
6 x 9 Rigid 3MM Vinyl

# Posters

Provide daily intuitive reminders to help reduce transmission of communicable diseases.

## Handwashing



HDP 24 x 18 PST152  
HDP 18 x 12 PST152C  
PP 18 x 12, 5pk PST152PP



HDP 24 x 18 PST152SP  
HDP 18 x 12 PST152CSP  
PP 18 x 12, 5pk PST152PPSP



HDP 24 x 18 PST156  
HDP 18 x 12 PST156C  
PP 18 x 12, 5pk PST156PP



HDP 24 x 18 PST156SP  
HDP 18 x 12 PST156CSP  
PP 18 x 12, 5pk PST156PPSP



HDP 18 x 24 PST137  
HDP 12 x 18 PST137C  
PP 12 x 18, 5pk PST137PP



HDP 18 x 24 PST138  
HDP 12 x 18 PST138C  
PP 12 x 18, 5pk PST138PP

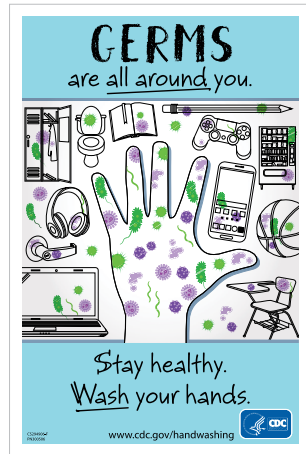
MATERIAL
Heavy-Duty Poster Paper (HDP)
Poster Paper 5pk, (PP)



## Handwashing



HDP 24 x 18 PST167  
 HDP 18 x 12 PST167C  
 PP 18 x 12, 5pk PST167PP



HDP 24 x 18 PST157  
 HDP 18 x 12 PST157C  
 PP 18 x 12, 5pk PST157PP



HDP 24 x 18 PST157SP  
 HDP 18 x 12 PST157CSP  
 PP 18 x 12, 5pk PST157PPSP



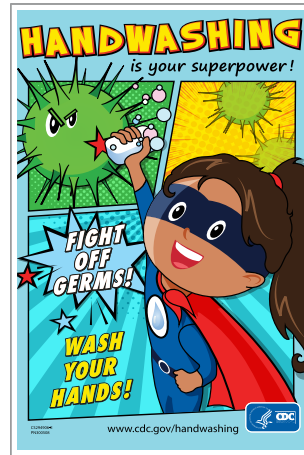
HDP 24 x 18 PST163  
 HDP 18 x 12 PST163C  
 PP 18 x 12, 5pk PST163PP



HDP 24 x 18 PST164  
 HDP 18 x 12 PST164C  
 PP 18 x 12, 5pk PST164PP



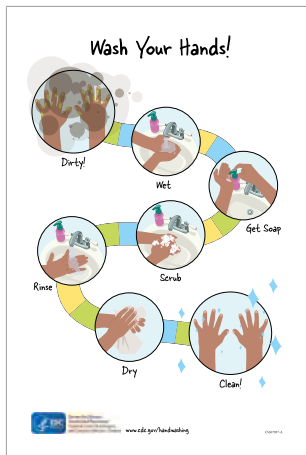
HDP 24 x 18 PST164SP  
 HDP 18 x 12 PST164CSP  
 PP 18 x 12, 5pk PST164PPSP



HDP 24 x 18 PST165  
 HDP 18 x 12 PST165C  
 PP 18 x 12, 5pk PST165PP



HDP 24 x 18 PST165SP  
 HDP 18 x 12 PST165CSP  
 PP 18 x 12, 5pk PST165PPSP



HDP 24 x 18 PST166  
 HDP 18 x 12 PST166C  
 PP 18 x 12, 5pk PST166PP

## GO CUSTOM

Use your logo, colors & copy

Our Customer Support Team is here to help you every step of the way.

Reach out today to get started!

MATERIAL
Heavy-Duty Poster Paper (HDP)
Poster Paper 5pk, (PP)



Your Sign



Original

**Illness Prevention**

**COVID-19 STOP THE SPREAD OF GERMS**

Help prevent the spread of respiratory diseases like COVID-19.

- Avoid close contact with people who are sick.
- Cover your cough or sneeze with a tissue, then throw the tissue in the trash.
- Don't touch frequently touched objects and surfaces.
- Wash your hands often with soap and water for at least 20 seconds.
- Stay home when you are sick, except to get medical care.
- Wash your hands often with soap and water for at least 20 seconds.

For more information: [www.cdc.gov/COVID19](http://www.cdc.gov/COVID19)

HDP 24 x 18 PST139  
 HDP 18 x 12 PST139C  
 PP 18 x 12, 5pk PST139PP

**Spanish**

**COVID-19 DETENGA LA PROPAGACIÓN DE LOS MICROBIOS**

Ayuda a prevenir la propagación de virus respiratorios como el nuevo COVID-19.

- Evita el contacto cercano con personas enfermas.
- Cuando te toses o estornudes cúbrete la boca con un pañuelo desechable. Luego tíralo a la basura.
- Uñete y desinfecta las manos en las superficies que se tocan frecuentemente.
- Quédese en casa si está enfermo, excepto para buscar atención médica.
- Lávate las manos frecuentemente con agua y jabón por al menos 20 segundos.

Para obtener más información: [www.cdc.gov/COVID19-es](http://www.cdc.gov/COVID19-es)

HDP 24 x 18 PST140  
 HDP 18 x 12 PST140C  
 PP 18 x 12, 5pk PST140PP

**COVID-19 Coronavirus Disease**

**PROTECT YOURSELF!**

Follow these Preventive Measures

**What are the symptoms of COVID-19?**  
 Patients with COVID-19 have had the following respiratory symptoms:  
 • Fever  
 • Cough  
 • Shortness of breath

**How does this Coronavirus Disease (COVID-19) spread?**  
 This virus that causes COVID-19 seems to be spreading from person-to-person contact.  
 • Someone sneezes into their elbow or coughs into their elbow.  
 • Someone coughs or sneezes directly into the face of another person.  
 • Someone touches a surface that has the virus on it and then touches their face.  
 • Someone touches a surface that has the virus on it and then touches another person's face.

**What if you get sick?**  
 Follow the spread of COVID-19 you are sick, by staying home when you are sick.  
 • Stay home when you are sick.  
 • Stay home when you are sick.  
 • Stay home when you are sick.  
 • Stay home when you are sick.

HDP 24 x 18 PST141  
 HDP 18 x 12 PST141C  
 PP 18 x 12, 5pk PST141PP

**Spanish**

**COVID-19 Enfermedad Coronavirus**

**PROTÉGETE!**

Siga Estas Medidas Preventivas

**¿Cuáles son los síntomas de COVID-19?**  
 Los pacientes con COVID-19 han tenido enfermedades respiratorias tales como los siguientes síntomas:  
 • Fiebre  
 • Tos  
 • Falta de aliento

**¿Cómo se propaga esta enfermedad por Coronavirus (COVID-19)?**  
 Este virus que causa COVID-19 parece estar propagándose de persona a persona.  
 • Alguien estornuda o tose directamente en la cara de otra persona.  
 • Alguien estornuda o tose directamente en la cara de otra persona.  
 • Alguien toca una superficie que tiene el virus y luego toca su cara.  
 • Alguien toca una superficie que tiene el virus y luego toca la cara de otra persona.

**¿Qué pasa si se enferma?**  
 Si usted se enferma con COVID-19, quédese en casa cuando esté enfermo.  
 • Quédese en casa cuando esté enfermo.  
 • Quédese en casa cuando esté enfermo.  
 • Quédese en casa cuando esté enfermo.

HDP 24 x 18 PST141SP  
 HDP 18 x 12 PST141CSP  
 PP 18 x 12, 5pk PST141PPSP

**Spanish**

**STOP Feeling Sick?**

Stay home when you are sick!

If you feel unwell or have the following symptoms  
**DO NOT ENTER THE BUILDING**

**FEVER COUGH SHORTNESS OF BREATH**

If you are in the building please leave and contact your health care provider. Then follow-up with your supervisor.

For more information on Coronavirus Disease: [cdc.gov/CORNAVIRUS](http://cdc.gov/CORNAVIRUS)

HDP 24 x 18 PST142  
 HDP 18 x 12 PST142C  
 PP 18 x 12, 5pk PST142PP

**Spanish**

**PARE ¿Se siente enfermo?**

¡Quédese en casa si está enfermo!

Si no se siente bien o tiene alguno de estos síntomas,  
**NO ENTRAR AL EDIFICIO**

**FIEBRE TOS DIFICULTAD PARA RESPIRAR**

Si yo está en el edificio, salga y comuníquese con su proveedor de atención médica. Luego, póngase en contacto con su supervisor.

For more information on Coronavirus Disease: [cdc.gov/CORNAVIRUS](http://cdc.gov/CORNAVIRUS)

HDP 24 x 18 PST142SP  
 HDP 18 x 12 PST142CSP  
 PP 18 x 12, 5pk PST142PPSP

**Bilingual**

**COVID-19 Coronavirus Disease**

**PROTECT YOURSELF!**

Follow these Preventive Measures

**What are the symptoms of COVID-19?**  
 Patients with COVID-19 have had the following respiratory symptoms:  
 • Fever  
 • Cough  
 • Shortness of breath

**How does this Coronavirus Disease (COVID-19) spread?**  
 This virus that causes COVID-19 seems to be spreading from person-to-person contact.  
 • Someone sneezes into their elbow or coughs into their elbow.  
 • Someone coughs or sneezes directly into the face of another person.  
 • Someone touches a surface that has the virus on it and then touches their face.  
 • Someone touches a surface that has the virus on it and then touches another person's face.

**What if you get sick?**  
 Follow the spread of COVID-19 you are sick, by staying home when you are sick.  
 • Stay home when you are sick.  
 • Stay home when you are sick.  
 • Stay home when you are sick.  
 • Stay home when you are sick.

HDP 18 x 24 PST174

**Cover Coughs and Sneezes**

Stop the spread of germs that can make you and others sick!

**Cover your mouth and nose with a tissue when you sneeze or cough.**

**If you don't have a tissue, use your elbow.**

**Wash hands often, especially after coughing or sneezing.**

For more information: [cdc.gov/coronavirus](http://cdc.gov/coronavirus)

HDP 24 x 18 PST177  
 HDP 18 x 12 PST177C  
 PP 18 x 12, 5pk PST177PP

**MATERIAL**

Heavy-Duty Poster Paper (HDP)

Poster Paper 5pk, (PP)





Informative

**Please read before entering.**

**IF YOU HAVE**

Fever Cough Shortness of breath

Please call our office before coming inside.  
Clinic Phone # \_\_\_\_\_

The clinic staff may ask you to wear a mask or use tissues to cover your cough.

Thank you for helping us keep our patients and staff safe.

 For more information: [www.cdc.gov/COVID19](http://www.cdc.gov/COVID19)

HDP 24 x 18 PST143  
HDP 18 x 12 PST143C  
PP 18 x 12, 5pk PST143PP

**Spanish**

**Por favor lea antes de entrar.**

**SI USTED TIENE**

Fiebre Tos Dificultad Para Respirar

Por favor llame a nuestra oficina antes de entrar.  
# de teléfono de la clínica \_\_\_\_\_

El personal de la clínica puede pedirle que use una máscara o use pañuelos para cubrirse la tos.

Gracias por ayudarnos a mantener seguros a nuestros pacientes y al personal.

 Para más información: [www.cdc.gov/COVID19](http://www.cdc.gov/COVID19)

HDP 24 x 18 PST143SP  
HDP 18 x 12 PST143CSP  
PP 18 x 12, 5pk PST143PPSP

**HOW LONG DO CORONAVIRUS\* LIVE ON SURFACES?**

SURFACE	EXAMPLES	DAYS OR HOURS
Metal	Doorknobs, Jewelry	5 Days
Glass	Drinking glasses, Mirrors, Windows	5 Days
Ceramics	Dishes, Pottery, Mugs	5 Days
Paper	Newspaper, Magazines	5 Days
Wood	Furniture, Decking	4 Days
Plastics	Milk bottles, Bus seats, Elevator buttons	2-3 Days
Stainless Steel	Refrigerators, Pots/pans, Sinks, Water bottles	2-3 Days
Cardboard	Shipping Boxes	1 Day
Aluminum	Soda cans, Tin foil, Water bottles	2-8 Hours
Copper	Pennies, Teakettles, Cookware	4 Hours
Food/Water	Doesn't seem to spread through food, and has not been found in water.	

**WHAT YOU CAN DO:** Disinfect all surfaces and objects in your home daily with a household cleaning spray or wipe. Wash hands for at least 20 seconds with soap and warm water, especially after visiting the supermarket or bringing packages. \*Transmission of COVID-19 has been documented on surfaces that remain COVID-19. This information is for reference only and is changing constantly. Source: CDC, FDA, Medical Director: Brandie Reardon, MD ©2020/2021

HDP 24 x 18 PST153  
HDP 18 x 12 PST153C  
PP 18 x 12, 5pk PST153PP

**THINK**

**PLEASE DISPOSE YOUR GLOVES, MASKS & WIPES CORRECTLY**

**IN THE TRASH**


NOT IN CART NOT ON GROUND

HDP 24 x 18 PST154  
HDP 18 x 12 PST154C  
PP 18 x 12, 5pk PST154PP

**Cleaning And Disinfecting Your Facility**

Everyday Steps, Steps When Someone is Sick, and Considerations for Employers

 For up to date information on Coronavirus Disease [cdc.gov/CORONAVIRUS](http://cdc.gov/CORONAVIRUS)

HDP 18 x 24 PST151  
HDP 12 x 18 PST151C  
PP 12 x 18, 5pk PST151PP

**WE ARE HERE TO HELP YOU.**

Please help us by remembering to wear your mask.



**This Business/Facility Supports a Safe Working Environment**

HDP 18 x 24 PST158  
HDP 12 x 18 PST158C  
PP 12 x 18, 5pk PST158PP

**WE ARE HERE TO HELP YOU**

Please help us! Remember to wear your mask.

**And While You're Here, Don't Forget The Basics:**

Wash your hands in our restrooms. Maintain social distancing. Practice respiratory hygiene. Avoid touching eyes, nose and mouth.



**This Business/Facility Supports a Safe Working Environment**

HDP 18 x 24 PST159  
HDP 12 x 18 PST159C  
PP 12 x 18, 5pk PST159PP

**Symptoms of Coronavirus (COVID-19)**

Know the symptoms of COVID-19, which can include the following:


Cough, shortness of breath or difficulty breathing. Fever or chills. Sore throat. Loss of taste or smell. Runny nose or congestion. Headache or body aches. Nausea or diarrhea. Fatigue.

Symptoms can range from mild to severe. Symptoms appear 2-14 days after you are exposed to the virus that causes COVID-19.

Seek medical care immediately if someone has Emergency Warning Signs of COVID-19:

- Trouble breathing
- Persistent pain or pressure in the chest
- Blue lips or face
- Builds up mucus or sputum
- Marked confusion

This is not all possible symptoms. Please call your healthcare provider for any other symptoms that are severe or concerning to you.

 [cdc.gov/coronavirus](http://cdc.gov/coronavirus)

HDP 24 x 18 PST176  
HDP 18 x 12 PST176C  
PP 18 x 12, 5pk PST176PP

**Spanish**

**Síntomas del coronavirus (COVID-19)**

Conozca los síntomas del COVID-19, que pueden incluir:

Tos, dificultad para respirar o dificultad para respirar. Fiebre o escalofríos. Dolor de garganta. Pérdida del gusto o el olfato. Nariz que corre o congestión. Dolor de cabeza o dolores corporales. Náusea o diarrea. Cansancio.

Los síntomas pueden ser de leves a graves, y aparecen de 2 a 14 días después de la exposición al virus que causa el COVID-19.

Busque atención médica de inmediato si alguien tiene signos de advertencia de una emergencia del COVID-19:

- Dificultad para respirar
- Dolor o presión persistente en el pecho
Labios o cara azules
- No puede despertarse o permanecer despierto
- Labios o cara azulados

Esto no son todos los síntomas posibles. Llame a su proveedor de atención médica si tiene cualquier otro síntoma que sea grave o preocupante.

 [cdc.gov/coronavirus-es](http://cdc.gov/coronavirus-es)

HDP 24 x 18 PST176SP  
HDP 18 x 12 PST176CSP  
PP 18 x 12, 5pk PST176PPSP

**STOP Feeling sick?**

Stop the spread of flu in the workplace. Stay home when you are sick.

Common Flu Signs & Symptoms Include:

- Fever or feeling flu-like symptoms
- Sore throat
- Runny or stuffy nose
- Cough
- Muscle or body aches
- Headaches
- Fatigue (tiredness)

**If you think you may have flu tell your supervisor and stay home from work.**

80% employees should stay home if they are sick. CDC recommends that you stay home for at least 24 hours after your fever (100 degrees Fahrenheit) or 32.2 degrees Celsius is gone. You then should be gone before the need to use a return-to-work permit.

For more information visit [www.cdc.gov/flu](http://www.cdc.gov/flu)



HDP 24 x 18 PST182  
HDP 18 x 12 PST182C  
PP 18 x 12, 5pk PST182PP

**MATERIAL**

Heavy-Duty Poster Paper (HDP)  
Poster Paper 5pk, (PP)



## Mask

**Spanish**

### Use of Cloth Face Coverings to Help Slow the Spread of COVID-19

**How to Wear Cloth Face Coverings**

- Fit snugly but comfortably against the side of the face.
- Do not cover the eyes or nose.
- Do not use a face covering if you have a fever, cough, or sore throat.
- Do not touch the face covering.
- Do not use a face covering if you are not feeling well.
- Do not use a face covering if you are not feeling well.

**How to Remove Cloth Face Coverings**

• Do not touch the face covering or anything on it. Untie or unhook the face covering. Do not touch the outside of the face covering. Do not touch the face covering if you are not feeling well.

**Should cloth face coverings be washed or otherwise cleaned regularly?**

• Yes. They should be washed regularly after each use.

**How does one safely store/clean a cloth face covering?**

• Wash the face covering in a sink or laundry tub with soap and water.

**How does one safely remove a used cloth face covering?**

• Do not touch the face covering or anything on it. Untie or unhook the face covering. Do not touch the outside of the face covering. Do not touch the face covering if you are not feeling well.




**cdc.gov/coronavirus**

### Use una cubierta de tela para cara para ayudar a desacelerar la propagación del COVID-19

**Cómo usar una cubierta de tela para la cara**

- Ajuste bien pero cómodamente contra los lados de la cara.
- No cubra los ojos ni la nariz.
- No use una cubierta de tela si tiene fiebre, tos o dolor de garganta.
- No toque la cubierta de tela.
- No use una cubierta de tela si no se siente bien.
- No use una cubierta de tela si no se siente bien.

**Recomendaciones de los CDC sobre las cubiertas de tela para la cara**

• Los CDC recomiendan usar cubiertas de tela para la cara en entornos públicos donde sea difícil mantener una distancia de 6 pies con otras personas.

**¿Las cubiertas de tela para la cara deben lavarse o limpiarse de alguna manera con regularidad?**

• Sí. Deben lavarse con agua y jabón después de cada uso.

**¿Cómo se deben retirar de manera segura una cubierta de tela para la cara usada?**

• No tocar la cubierta de tela. Desatar o desabrochar la cubierta de tela.

**¿Cómo se debe retirar de manera segura una cubierta de tela para la cara usada?**

• No tocar la cubierta de tela. Desatar o desabrochar la cubierta de tela.




**cdc.gov/coronavirus**

HDP 24 x 18 PST144  
 HDP 18 x 12 PST144C  
 PP 18 x 12, 5pk PST144PP

HDP 24 x 18 PST144SP  
 HDP 18 x 12 PST144CSP  
 PP 18 x 12, 5pk PST144PPSP

### How to Safely Wear and Take Off a Cloth Face Covering

**WEAR YOUR FACE COVERING CORRECTLY**

- Fit snugly but comfortably against the side of the face.
- Do not cover the eyes or nose.
- Do not use a face covering if you have a fever, cough, or sore throat.
- Do not touch the face covering.
- Do not use a face covering if you are not feeling well.

**USE THE FACE COVERING TO HELP PROTECT OTHERS**



- Wear a face covering in public places when in close contact with others.
- Do not touch the face covering.
- Do not touch the face covering if you are not feeling well.

**FOLLOW EVERYDAY HEALTH HABITS**

- Stay at least 6 feet away from others.
- Avoid contact with people who are sick.
- Wash your hands often, with soap and water, for at least 20 seconds each time.
- Do not touch your face and avoid your eyes, nose, and mouth.

**TAKE OFF YOUR CLOTH FACE COVERING CAREFULLY WHEN YOU'RE HOME**

- Do not touch the face covering or anything on it.
- Untie or unhook the face covering. Do not touch the outside of the face covering.
- Do not touch the face covering if you are not feeling well.

**cdc.gov/coronavirus**

### Cómo usar y quitarse una cubierta de tela para la cara de manera segura

**USE SU CUBIERTA DE TELA PARA LA CARA CORRECTAMENTE**

- Ajuste bien pero cómodamente contra los lados de la cara.
- No cubra los ojos ni la nariz.
- No use una cubierta de tela si tiene fiebre, tos o dolor de garganta.
- No toque la cubierta de tela.
- No use una cubierta de tela si no se siente bien.

**USE LA CUBIERTA DE TELA PARA LA CARA PARA AYUDAR A PROTEGER A LOS DEMÁS**



- Use una cubierta de tela para la cara en lugares públicos cuando sea difícil mantener una distancia de 6 pies con otras personas.
- No toque la cubierta de tela.
- No toque la cubierta de tela si no se siente bien.

**PRÁCTIQUE HÁBITOS DE SALUD COTIDIANOS**

- Manténgase a al menos 6 pies de distancia.
- Evite el contacto con personas que estén enfermas.
- Lávese las manos con frecuencia con agua y jabón por al menos 20 segundos cada vez.
- No toque su cara y evite tocarse los ojos, la nariz y la boca.

**QUÍTASE LA CUBIERTA DE TELA PARA LA CARA CON CUIDADO, CUANDO ESTE EN CASA**

- No toque la cubierta de tela o cualquier cosa que esté en ella.
- Desate o desabroche la cubierta de tela. No toque el exterior de la cubierta de tela.
- No toque la cubierta de tela si no se siente bien.

**cdc.gov/coronavirus-es**

HDP 24 x 18 PST168  
 HDP 18 x 12 PST168C  
 PP 18 x 12, 5pk PST168PP

HDP 24 x 18 PST168SP  
 HDP 18 x 12 PST168CSP  
 PP 18 x 12, 5pk PST168PPSP

**MATERIAL**  
 Heavy-Duty Poster Paper (HDP)  
 Poster Paper 5pk, (PP)



### Please wear a cloth face covering.




**6 ft**

**Maintain a distance of 6 feet whenever possible.**

**cdc.gov/coronavirus**

### Please wear a cloth face covering.



**6 ft**

**Maintain a distance of 6 feet whenever possible.**

**cdc.gov/coronavirus**

### Por favor use una cubierta de tela para la cara.



**6 pies**

**Mantenga una distancia de 6 pies cuando sea posible.**

**cdc.gov/coronavirus**

HDP 24 x 18 PST169  
 HDP 18 x 12 PST169C  
 PP 18 x 12, 5pk PST169PP

HDP 24 x 18 PST169SP  
 HDP 18 x 12 PST169CSP  
 PP 18 x 12, 5pk PST169PPSP

## Mask


**DO YOUR PART**  
Please wear a mask and practice social distancing.



*Help prevent the spread of illness on campus.*

HDP 24 x 18 PST170  
HDP 18 x 12 PST170C  
PP 18 x 12, 5pk PST170PP

**DO YOUR PART**  
Please wear a mask and practice social distancing.



*Help prevent the spread of illness on campus.*

HDP 24 x 18 PST171  
HDP 18 x 12 PST171C  
PP 18 x 12, 5pk PST171PP

**Please wear your mask**




*and practice social distancing*

HDP 24 x 18 PST172  
HDP 18 x 12 PST172C  
PP 18 x 12, 5pk PST172PP

**Please wear your mask**




*and practice social distancing*

HDP 24 x 18 PST173  
HDP 18 x 12 PST173C  
PP 18 x 12, 5pk PST173PP

**Make Our School a Safe Place for Everyone!**




HDP 24 x 18 PST161  
HDP 18 x 12 PST161C  
PP 18 x 12, 5pk PST161PP

**Do your part!**




**Make Our School a Safe Place for Everyone!**

HDP 24 x 18 PST162  
HDP 18 x 12 PST162C  
PP 18 x 12, 5pk PST162PP

**Spanish**

**HOW TO WEAR A MASK PROPERLY**



- Wash your hands or clean them with sanitizer
- Prepare your mask
- Hold mask by the ear loops and place a loop around each ear.
- Pull the bottom of the mask over your mouth and chin
- Mold or pinch the top to the shape of your nose
- Avoid touching the front of the mask while wearing it

HDP 24 x 18 PST183  
HDP 18 x 12 PST183C  
PP 18 x 12, 5pk PST183PP

**COMO USAR UNA MÁSCARA CORRECTAMENTE**




- Líquese las manos o límpielas con desinfectante
- Prepare su máscara
- Sostén la máscara por los lazos y colócala un lazo alrededor de cada oreja
- Tire de la parte inferior de la máscara sobre su boca y mentón
- Moldear o pellizcar la parte superior a la forma de su nariz
- Evite tocar el frente de la máscara mientras la usa

HDP 24 x 18 PST183SP  
HDP 18 x 12 PST183CSP  
PP 18 x 12, 5pk PST183PPSP

**Guidelines for wearing a mask in public and at work.**

*A protective mask or face covering can lower the risk of infecting others and being infected.*

- Wash hands before putting on mask.
- Secured with ties or ear loops.
- Mask should cover your mouth, nose and chin.
- Mask should fit snugly against sides of the face.
- Do not touch your face, the mask, or adjust mask while it is on.
- If you touch mask, wash hands right away.
- Remove by holding the ear loops or ties ONLY.
- Be careful not to touch eyes, nose, or mouth when removing.
- Discard in a closed receptacle.
- To wash and reuse, place in a sealed receptacle to transport. Launder in machine with HOT water (160°F) or soak for five minutes in a solution of two tablespoons of bleach per quart (liter) of water. Rinse well with fresh water and hang to air-dry.
- Wash hands immediately after removing and handling mask.



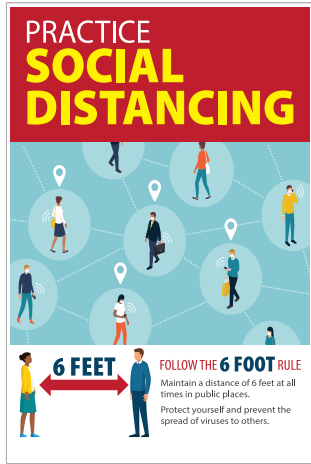
HDP 24 x 18 PST145  
HDP 18 x 12 PST145C  
PP 18 x 12, 5pk PST145PP



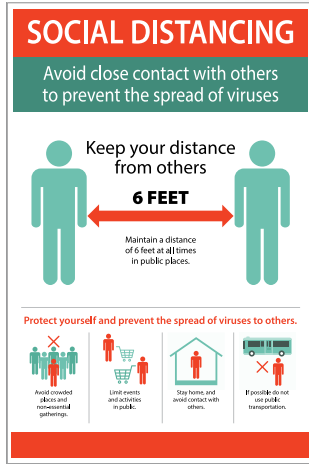
**MATERIAL**  
Heavy-Duty Poster Paper (HDP)  
Poster Paper 5pk, (PP)



**Social Distancing**



HDP 24 x 18 PST147  
 HDP 18 x 12 PST147C  
 PP 18 x 12, 5pk PST147PP



HDP 24 x 18 PST148  
 HDP 18 x 12 PST148C  
 PP 18 x 12, 5pk PST148PP



HDP 24 x 18 PST149  
 HDP 18 x 12 PST149C  
 PP 18 x 12, 5pk PST149PP



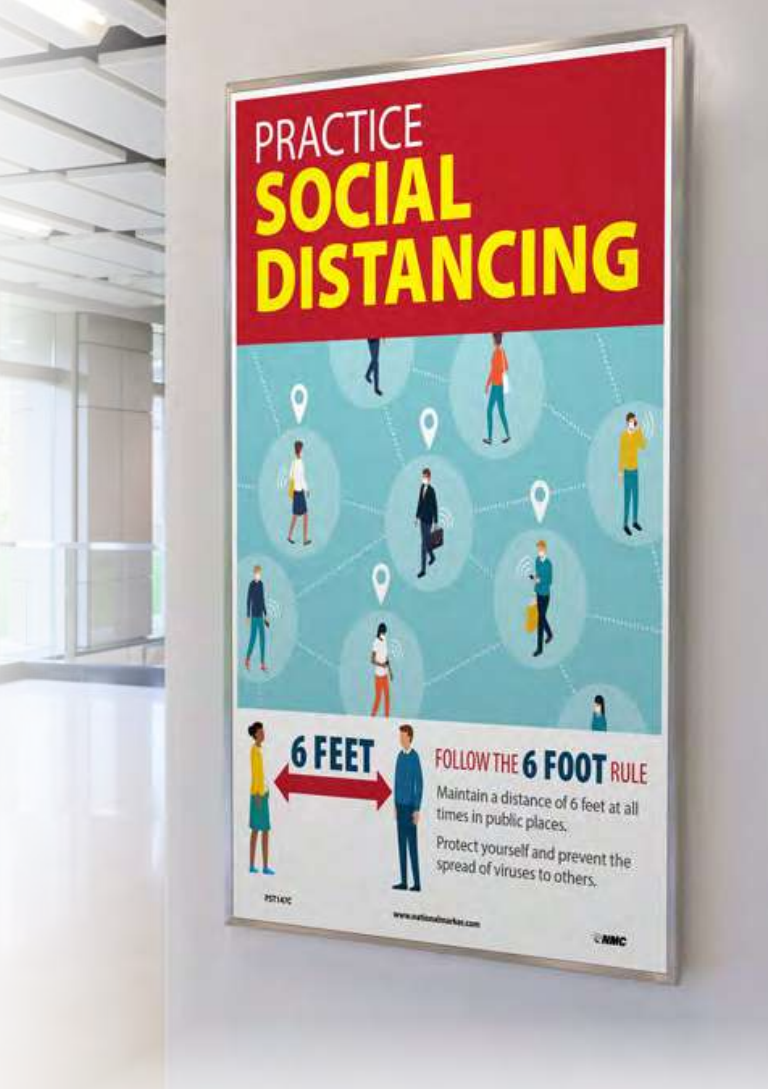
HDP 24 x 18 PST150  
 HDP 18 x 12 PST150C  
 PP 18 x 12, 5pk PST150PP



HDP 24 x 18 PST146  
 HDP 18 x 12 PST146C  
 PP 18 x 12, 5pk PST146PP



HDP 24 x 18 PST155  
 HDP 18 x 12 PST155C  
 PP 18 x 12, 5pk PST155PP



*Spanish*



HDP 24 x 18 PST155SP  
 HDP 18 x 12 PST155CSP  
 PP 18 x 12, 5pk PST155PPSP

MATERIAL
Heavy-Duty Poster Paper (HDP)
Poster Paper 5pk, (PP)



# Seasonal Flu Prevention

**I CAN'T MISS WORK BECAUSE OF THE FLU.**

For more information, visit <http://www.cdc.gov/flu>

Everyone gets flu every year, but you can prevent it. Get your flu vaccine, and you can protect yourself, your family, and your coworkers. This season, protect yourself and those around you by getting a flu vaccine.

Even healthy people can get the flu, and it can be serious. This season, protect yourself and those around you by getting a flu vaccine.

**CDC** U.S. Department of Health and Human Services  
Centers for Disease Control and Prevention

HDP 24 x 18 PST181  
HDP 18 x 12 PST181C  
PP 18 x 12, 5pk PST181PP

**DON'T LET YOUR GERMS GO FOR A RIDE**

**COVER YOUR COUGHS AND SNEEZES**  
with a tissue or use the inside of your elbow. If you use a tissue, throw it in the trash, and wash your hands right away.

If you can't wash your hands, ask your teacher or another adult for hand sanitizer.

**CDC** [cdc.gov/coronavirus](http://cdc.gov/coronavirus)

HDP 24 x 18 PST175  
HDP 18 x 12 PST175C  
PP 18 x 12, 5pk PST175PP

*Spanish*

**NO DEJES QUE LOS MICROBIOS SE VAYAN DE PASEO**

**CÚBRETE LA NARIZ Y LA BOCA AL TOSER Y ESTORNUDAR**  
con un pañuelo desechable o con la parte interna del codo. Si usas un pañuelo desechable, bórralo a la basura y lívate las manos de inmediato.

Si no puedes lavarte las manos, pídele a tu maestro o a otro adulto que te den desinfectante de manos.

**CDC** [cdc.gov/coronavirus-es](http://cdc.gov/coronavirus-es)

HDP 24 x 18 PST175SP  
HDP 18 x 12 PST175CSP  
PP 18 x 12, 5pk PST175PPSP

**NO MORE EXCUSES**  
THERE ARE MANY PLACES TO GET YOUR FLU VACCINE.

Anyone can get the flu, and it can be serious. Every year, protect yourself and those around you by getting a flu vaccine.

For more information, visit <http://www.cdc.gov/flu>

HDP 18 x 24 PST178  
HDP 12 x 18 PST178C  
PP 12 x 18, 5pk PST178PP

Everyone 6 months and older should get a flu vaccine. This means you. This season, protect yourself—and those around you—by getting a flu vaccine.

<http://www.cdc.gov/flu> • 1-800-CDC-1090  
Get the facts.

Get vaccinated.

**CDC** U.S. Department of Health and Human Services  
Centers for Disease Control and Prevention

HDP 18 x 24 PST179  
HDP 12 x 18 PST179C  
PP 12 x 18, 5pk PST179PP

**FIGHT FLU**

Get your family vaccinated against flu this season. It's the best way to protect you and your loved ones from getting the flu.

**CDC** [www.cdc.gov/fightflu](http://www.cdc.gov/fightflu)

HDP 24 x 18 PST180  
HDP 18 x 12 PST180C  
PP 18 x 12, 5pk PST180PP

*Spanish*

**COMBATA LA INFLUENZA**

Vacune a su familia contra la influenza esta temporada. Es la mejor manera de protegerse y proteger a sus seres queridos contra esta enfermedad.

**CDC** [www.cdc.gov/fightflu](http://www.cdc.gov/fightflu)

HDP 24 x 18 PST180SP  
HDP 18 x 12 PST180CSP  
PP 18 x 12, 5pk PST180PPSP

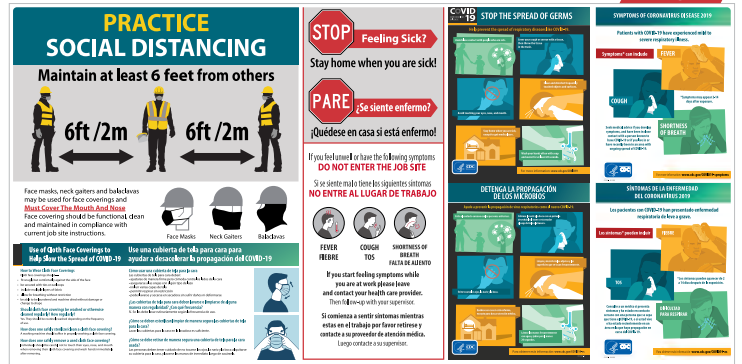
MATERIAL
Heavy-Duty Poster Paper (HDP)
Poster Paper 5pk, (PP)





# Large Format Indoor/Outdoor Signs

Made of lightweight, durable aluminum composite (ACP), these signs convey important messaging at a distance.



2' x 4' English/Spanish M6524ACP  
4' x 8' English/Spanish M6548ACP

**COVID-19 PROTECT YOURSELF!**

**Follow these Preventative Measures**

- Wash your hands often with soap and water for at least 20 seconds.
- If soap and water are not available use a hand sanitizer with at least 60% alcohol.
- Maintain a 6 foot distance between people whenever possible.
- Avoid touching your eyes, nose, and mouth.
- Cover your mouth and nose when you cough or sneeze.

2' x 4' English M6124ACP  
4' x 8' English M6148ACP

**COVID-19 ¡PROTÉGETE!**

**Sigue Estas Medidas Preventivas**

- Lávate las manos a menudo con agua y jabón durante al menos 20 segundos.
- Si no hay agua y jabón, usa un desinfectante para manos con al menos un 60% de alcohol.
- Mantén una distancia de 6 pies entre las personas siempre que sea posible.
- Evita tocarte los ojos, la nariz y la boca.
- Cúbrete la boca y la nariz al toser o estornudar.

2' x 4' Spanish M6124ACPSP  
4' x 8' Spanish M6148ACPSP

**Give each other space. 6 feet**

**COVID-19 Safety Precautions**

Stay home if you are sick.

- Wash your hands often with soap and water for at least 20 seconds.
- If soap and water are not available use hand sanitizer with at least 60% alcohol.
- Maintain a 6 foot distance between people whenever possible.
- Wear a mask when close contact cannot be avoided.
- Avoid touching your eyes, nose, and mouth.
- Cover your mouth and nose when you cough or sneeze.

**Feeling Sick? DO NOT ENTER THE JOB SITE**

If you start feeling symptoms while you are at work please leave and contact your health care provider. Then follow-up with your supervisor.

2' x 4' English M6224ACP  
4' x 8' English M6248ACP

**Darse espacio el uno al otro. 6 pies**

**COVID-19 Precauciones de seguridad**

Quédete en casa si estás enfermo.

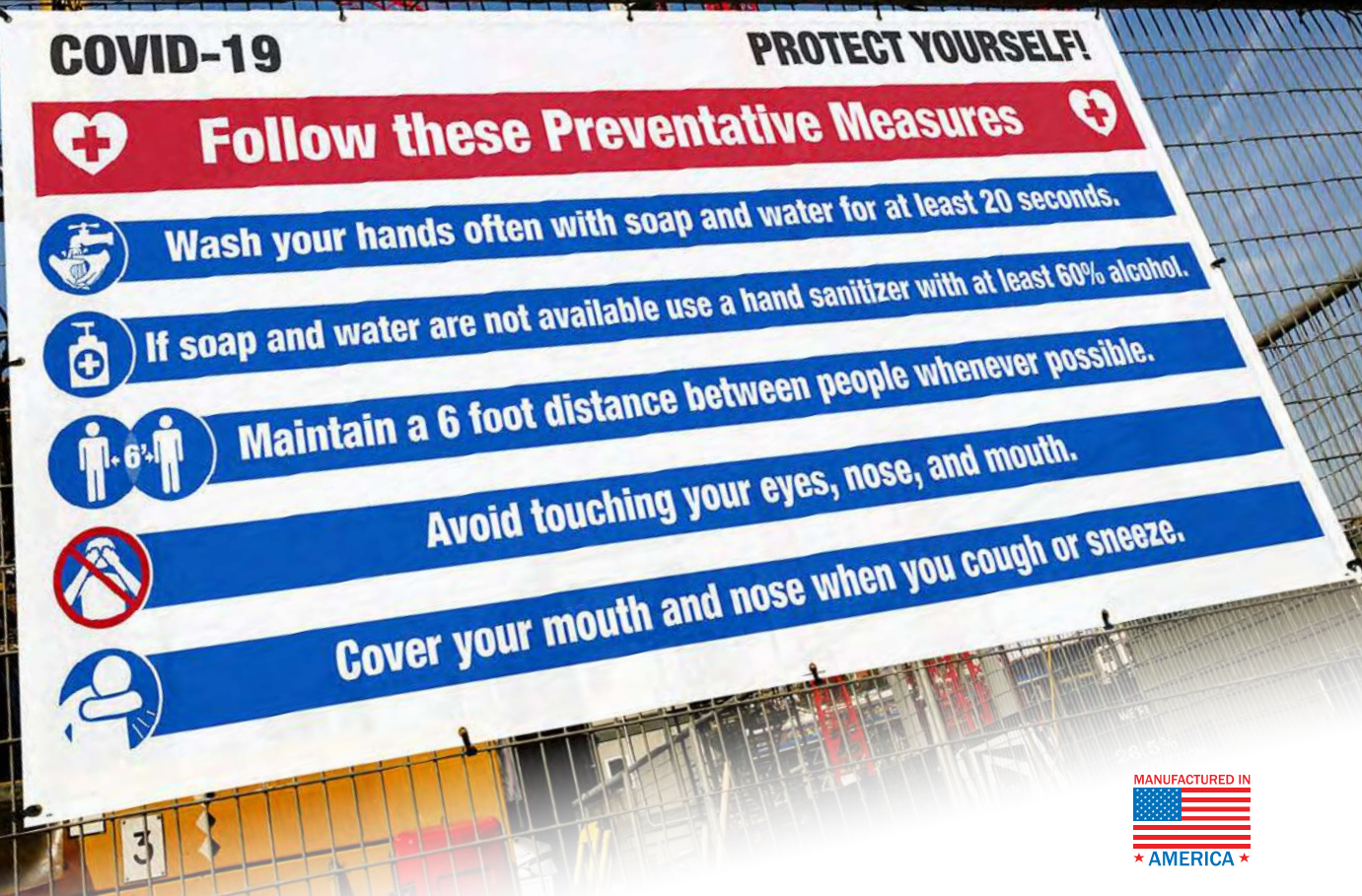
- Lávate las manos a menudo con agua y jabón durante al menos 20 segundos.
- Si no hay agua y jabón, usa un desinfectante para manos con al menos un 60% de alcohol.
- Mantén una distancia de 6 pies entre las personas siempre que sea posible.
- Usar una máscara cuando no pueda evitarse el contacto cercano.
- Evita tocarte los ojos, la nariz y la boca.
- Cúbrete la boca y la nariz al toser o estornudar.

**¿Se siente enfermo? NO ENTRE AL LUGAR DE TRABAJO**

Si se siente mal o tiene los siguientes síntomas NO ENTRE AL LUGAR DE TRABAJO

Si comienza a sentir síntomas mientras estas en el trabajo por favor retírese y contacte a su proveedor de atención médica. Luego contacte a su supervisor.

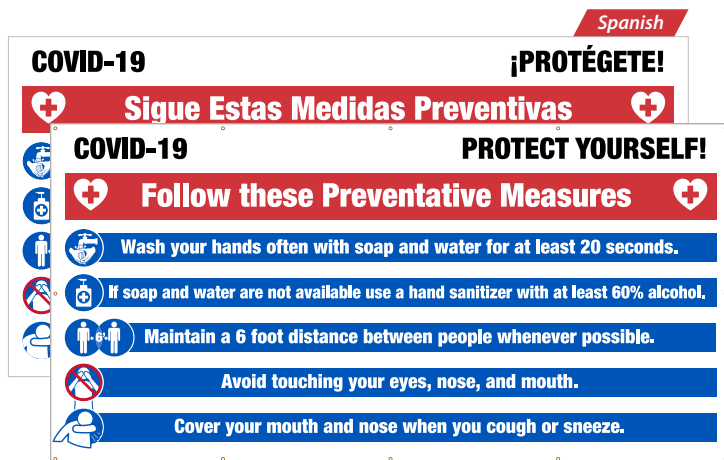
2' x 4' Spanish M6224ACPSP  
4' x 8' Spanish M6248ACPSP



# Mesh Fence Banners

In outdoor environments, in-and-around the jobsite, Mesh Banners help keep health and safety information visible at all times.

- Durable mesh banner with reinforced grommets
- Mesh material allows for air flow
- Ideal for job site/facility use
- Sized specifically for use on fencing



6' x 12' English BT61  
 5' x 10' English BT561  
 6' x 12' Spanish SPBT61  
 5' x 10' Spanish SPBT561



6' x 12' English BT62  
 5' x 10' English BT562  
 6' x 12' Spanish SPBT62  
 5' x 10' Spanish SPBT562

36 x 120 English BT64  
36 x 60 English BT564



# Motivational & Safety Vinyl Banners

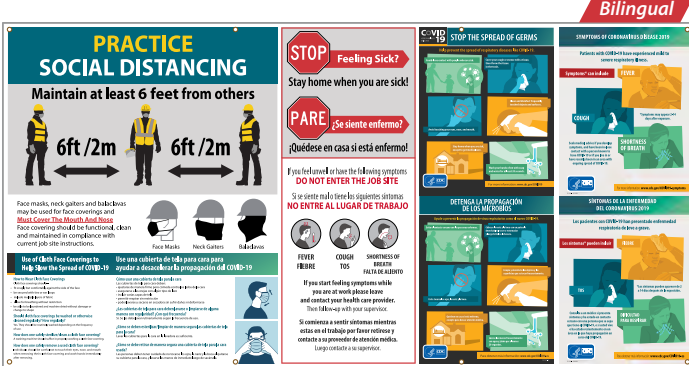
Convey your commitment to safety and employee well-being with motivational and informative banners. Durable for outdoor use. Features reinforced grommets.



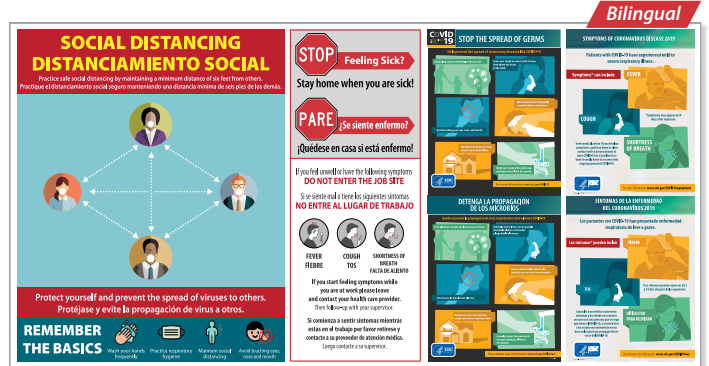
3' x 10' English BT64  
3' x 5' English BT564



3' x 10' English BT66  
3' x 5' English BT566



5' x 8.6' English/Spanish BT65  
5' x 10' English/Spanish BT565



5' x 8.6' English/Spanish BT68  
5' x 10' English/Spanish BT568



3' x 10' English BT77  
3' x 5' English BT577



3' x 10' English BT81  
3' x 5' English BT581



Motivational & Safety Vinyl Banners

Bilingual

## REMEMBER THE 3 Ws

## RECUERDEN LAS 3 REGLAS





**WEAR**  
a cloth face covering  
**USAR**  
una cubierta de tela

**WAIT**  
six feet apart avoid close contact  
**ESPERAR**  
seis pies de distancia  
evitar contacto cercano

**WASH**  
your hands often or use sanitizer  
**LAVAR**  
frecuentemente las manos  
o usar desinfectante

3' x 10' English/Spanish BT78  
3' x 5' English/Spanish BT578

## DO YOUR PART!

Stay vigilant. Let's maintain a safe and healthy work environment.

**Stay home if you are sick.**

- ▶ Mask or face covering is required.
- ▶ Social distancing, maintain 6 ft distance.
- ▶ Wash hands frequently or use hand sanitizer.
- ▶ Avoid touching your eyes, nose, and mouth.
- ▶ Cover your mouth and nose when you cough or sneeze.

Protect yourself and prevent the spread of illness to others.

3' x 10' English BT82  
3' x 5' English BT582

## KEEP THE WORKPLACE SAFE

PRACTICE GOOD HYGIENE	BE CAREFUL WITH MEETINGS	HANDLE FOOD CAREFULLY	STAY OR GO HOME IF...
No handshakes Wash with soap and water for 20 seconds or use alcohol-based sanitizers. Cover coughs and sneezes. Disinfect surfaces	Use video conferencing or call for meetings when possible. Hold in-person meetings in open, well-ventilated spaces. Consider postponing large gatherings.	Limit the sharing of food. Ensure cafeteria staff practice strict hygiene.	Stay home if you are sick. - Fever - Cough - Shortness of breath Stay home if you have a sick family member at home.

### PREVENT THE SPREAD OF GERMS!

3' x 10' English BT79  
3' x 5' English BT579



GET A FLU SHOT

WASH YOUR HANDS

STAY HOME IF YOU ARE SICK

ASK ABOUT PRESCRIPTION ANTIVIR


it's up to you to stop

# THE FLU


3' x 10' English BT83  
3' x 5' English BT583

## SOCIAL DISTANCING

Avoid close contact with others to prevent the spread of viruses







Keep your distance from others  
**6 FEET**  
Maintain a distance of 6 feet at all times.



Avoid crowds  
Stay home when you are sick.



Protect yourself and prevent the spread of viruses to others.

3' x 10' English BT80  
3' x 5' English BT580

# FEND OFF THE FLU

Get vaccinated this year.  
It's our best defense

3' x 10' English BT84  
3' x 5' English BT584

## Stay home if you are sick.

Feel like you're coming down with something?

COMMON SYMPTOMS													
<b>COLD</b> <small>Onset of Symptoms GRADUAL</small>	RARE	RARE	SOMETIMES	SOMETIMES	COMMON	COMMON	COMMON	COMMON	COMMON	RARE	-	-	RARE
<b>FLU</b> <small>Onset of Symptoms SUDDEN</small>	COMMON	COMMON	COMMON	COMMON	SOMETIMES	-	SOMETIMES	COMMON	-	-	-	-	RARE
<b>COVID-19</b> <small>Onset of Symptoms GRADUAL</small>	COMMON	SOMETIMES	SOMETIMES	COMMON	RARE	-	SOMETIMES	COMMON	COMMON	SOMETIMES	SOMETIMES	SOMETIMES	SOMETIMES

You may have COVID-19 if you experience one or more of these symptoms: Covid-19 symptoms range from mild to severe and may appear 2 to 14 days after exposure.

3' x 10' English BT85  
3' x 5' English BT585





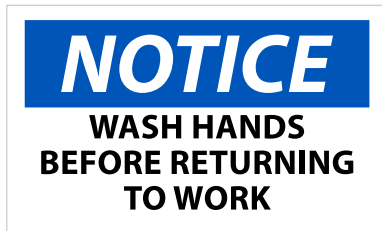
## Illness Prevention Labels



PSV 5 x 3, 5pk WH1AP



PSV 5 x 3, 5pk WH2AP



PSV 3 x 5, 5pk N43AP  
PSVR 3 x 5, 5pk N43APR



PSV 3 x 5, 5pk N362AP



PSV 3 x 5, 5pk N523AP



PSV 3 x 5, 5pk WH4AP  
PSVR 3 x 5, 5pk WH4APR



PSV 3 x 5, 5pk M627AP  
PSV 3 x 5, 5pk M627APSP



PSV 5 x 3, 5pk ML82AP



PSV 5 x 3, 5pk ML83AP



PSV 5 x 3, 5pk ML84AP



PSV 5 x 3, 5pk ML85AP

MATERIAL
Pressure Sensitive Removable Vinyl (PSVR)
Pressure Sensitive Vinyl (PSV)



## Illness Prevention Labels



PSV 6 x 6, 5pk ML71P  
PSV 6 x 6, 50pk ML71P50



PSV 6 x 6, 5pk ML72P  
PSV 6 x 6, 50pk ML72P50



PSV 6 x 6, 5pk ML73P  
PSV 6 x 6, 50pk ML73P50



PSV 6" Dia., 5pk ML74P  
PSV 6" Dia., 50pk ML74P50



PSV 6" Dia., 5pk ML75P



PSV 6" Dia., 5pk ML76P



PSV 6" Dia., 5pk ML81P  
PSV 6" Dia., 50pk ML81P50

## GO CUSTOM

Use your logo, colors & copy

Our Customer Support Team is here to help you every step of the way.

Reach out today to get started!



Your Sign

Original

### MATERIAL

Pressure Sensitive Vinyl (PSV)

Pressure Sensitive Vinyl (PSV)



# Clean & Sanitized Labels

Inspire confidence that your environment is virus and bacteria free with labels to identify recent sanitation.

Available in packs and rolls, in Pressure Sensitive Vinyl (PSV) or Pressure Sensitive Removable Vinyl (PSVR).

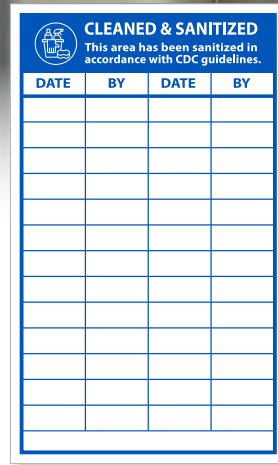


ML77P



ML78PR

ITEM NO	SIZE	MATERIAL	QUANTITY
ML77P	2" Dia	PSV	25/Pk
ML77P500	2" Dia	PSV	500/Roll
ML78PR	2" Dia	PSVR	25/Pk
ML78PR500	2" Dia	PSVR	500/Roll



ML86APR

ITEM NO	SIZE	MATERIAL	QUANTITY
ML86APR	5 x 3	PSVR	5/Pk
ML86APR500	5 x 3	PSVR	500/Roll



ML87PR



WOL21500

ITEM NO	SIZE	MATERIAL	QUANTITY
ML87PR	3 x 9	PSVR	25/Pk
ML87PR500	3 x 9	PSVR	500/Roll
WOL21500	1 x 3	PSVR	500/Roll
WOL22500	2 x 3	PSVR	500/Roll



WOL22500



ML80PR

ITEM NO	SIZE	MATERIAL	QUANTITY
ML80PR	2 x 3	PSVR	25/Pk
ML80PR500	2 x 3	PSVR	500/Roll



ISO674CL & ISO670CL Shown

## Guidance Labels



- PSV 4" Dia., 5pk ISO474AP
- PSV, Clear 4" Dia., 5pk ISO474CL
- PSV 4" Dia., 50pk ISO474AP50
- PSV 6" Dia., 5pk ISO674AP
- PSV Clear 6" Dia., 5pk ISO674CL
- PSV 6" Dia., 50pk ISO674AP50



- PSV 2" Dia., 10pk ISO270AP
- PSV, Clear 2" Dia., 10pk SO270CL
- PSV 4" Dia., 5pk ISO470AP
- PSV, Clear 4" Dia., 5pk ISO470CL
- PSV 6" Dia., 5pk ISO670AP
- PSV, Clear 6" Dia., 5pk ISO670CL



- PSV 4" Dia., 5pk ISO475AP
- PSV, Clear 4" Dia., 5pk ISO475CL
- PSV 4" Dia., 50pk ISO475AP50
- PSV 6" Dia., 5pk ISO675AP
- PSV Clear 6" Dia., 5pk ISO675CL
- PSV 6" Dia., 50pk ISO675AP50



- PSV 2" Dia., 10pk ISO217AP
- PSV 4" Dia., 5pk ISO417AP
- PSV 6" Dia., 5pk ISO617AP



- PSV 4" Dia., 5pk ISO471AP
- PSV 6" Dia., 5pk ISO671AP



- PSV 4" Dia., 5pk ISO472AP
- PSV 6" Dia., 5pk ISO672AP
- PSV 4" Dia., 50pk ISO472AP50
- PSV 6" Dia., 50pk ISO672AP50



- PSV 4" Dia., 5pk ISO473AP
- PSV 4" Dia., 50pk ISO473AP50
- PSV 6" Dia., 5pk ISO673AP
- PSV 6" Dia., 50pk ISO673AP50

### MATERIALS

PSV = Pressure Sensitive Vinyl  
 PSV, Clear = Clear reverse printed Pressure Sensitive Vinyl. Place on the interior of windows and glass doors to be viewed from the other side.





## Personnel/ID Labels

Utilize for visitor identification, vulnerable employees and more.

- 2" Diameter
- Adhesive Pressure Sensitive Vinyl (PSV)

MATERIAL	QUANTITY
PSV	25/Pk
Reflective	25/Pk



HH20



HH20R  
(Reflective)



HH172



HH173



HH48



HH48R  
(Reflective)



HH174



HH175



ML79PR

ITEM NO	SIZE	MATERIAL	QUANTITY
ML79PR	2" Dia	PSVR	25/Pk
ML79PR500	2" Dia	PSVR	500/Roll

## ICE Hard Hat Label

- 100% Waterproof
- 2.75" x .5"
- 25/Pack

PART NO.

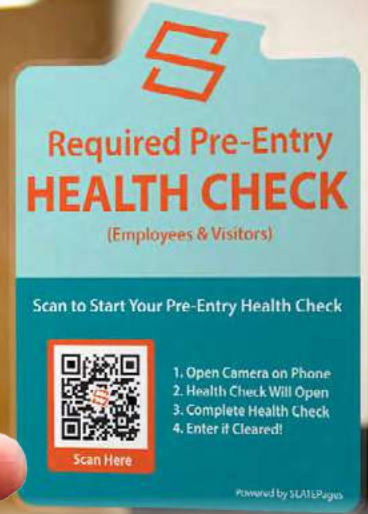
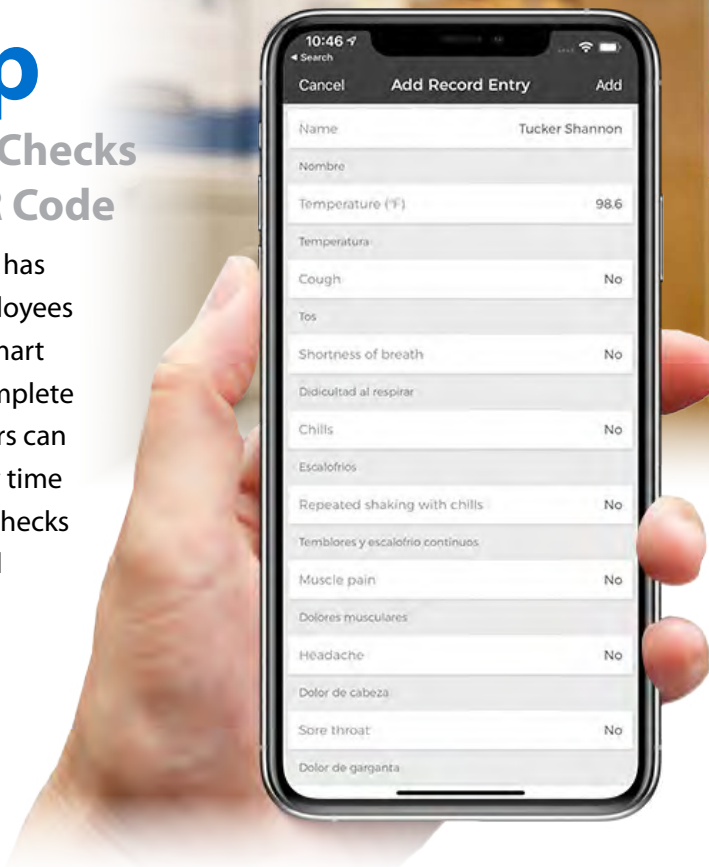
HH205



# Employee Health Check App

Perform Daily Health Checks via Smart Phone & QR Code

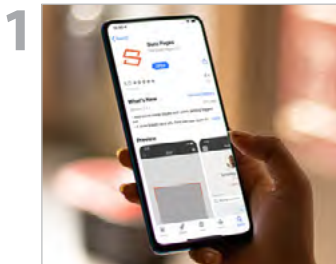
Performing pre-entry health checks has never been easier. Upon entry, employees & visitors use the camera on their smart phone to scan the QR code, and complete the required health check. Employers can sign into a unique dashboard at any time to view current or recorded health checks from all entrants; providing a critical component to contact tracing.



## For Employees

- STEP 1**  
Scan QR code
- STEP 2**  
Complete Health Check
- STEP 3**  
Work Healthy

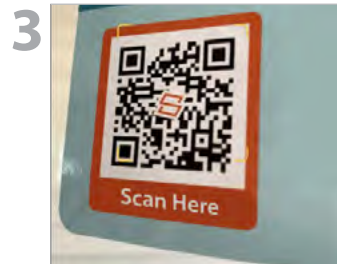
## For Employers



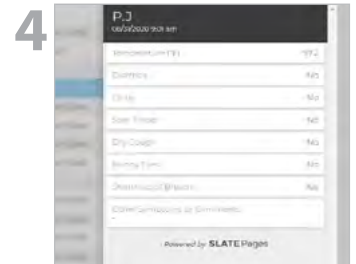
1 HR/Facility Management Downloads App for Dashboard Access & Tracking



2 Mark entrance-ways with provided labels, deploy & educate



3 Require all employees to download the app and establish a profile – no user limits



4 Administrative review of Current and Recorded Health Checks/Contact Tracing

## What's Included?

- One unique QR code for your facility. This is where all data is tracked and stored
  - Employees & Visitors scan upon entry to complete their pre-entry health check
- Free downloadable Health-Check App for all employees
  - Eliminates paper checklists and clipboards
- Entrance Decals to mark designated Health Check locations
  - (1) 6" x 8" Entrance Door Label (place inside of glass, visible from outside)
  - (2) 3" x 5" adhesive backed labels for secondary entrances.
- Reporting software for employer to track and store all health checks
- Also includes the ability to track Hand Washing & Sanitization Records

PART NO.  
CSP01



Check out page 32 for more details

# Workplace & Jobsite Health Screening Wristbands

# SCREENING WRISTBANDS



## Make Safety Visible with Tyvek® Screening Wristbands



QTY
1000/Box

### DESCRIPTION:

NMC's Tyvek® Workplace & Jobsite Health Screening Wristbands were created with employee health and well-being in mind. Wristbands are pre-printed with messaging to showcase who should/should not be on a job-site or in the workplace. NMC offers a variety of colors and designs including pre-screen, visitor, temperature, and days of the week.

### FEATURES:

- Made with durable, 100% DuPont® Tyvek®
- Secure and tamper-evident closure
- Sequentially numbered for accountability
- Waterproof and tear-resistant
- Ideal for short-term use: 1-2 days
- Measures 3/4" x 10"
- Shipped in boxes of 1,000
- Custom imprinting, barcoding, colors and custom numbering available



WB01BL



WB01SB



WB01YL



WB01AQ



WB01RD



WB01GR



WB01OR



WB02GR



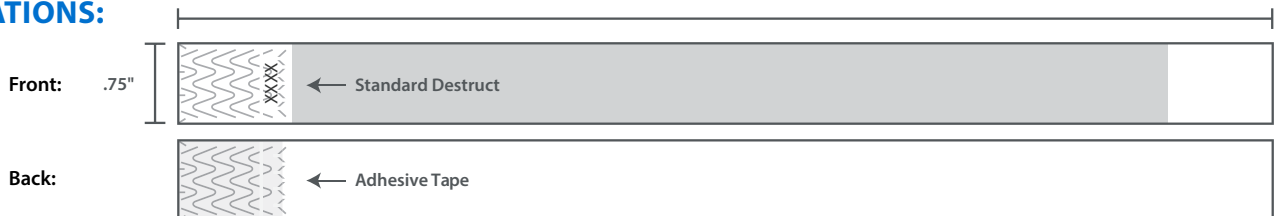
WB03RD



WB04PK

10"

### SPECIFICATIONS:



Tyvek® is a registered trademark of DuPont®.



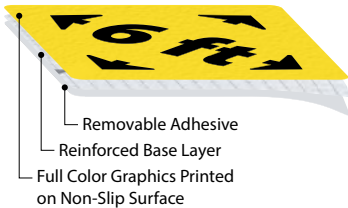
# FLOOR SIGN

## Material Overview



### TexWalk®

Up-to 6 Month Use



Textured Surface



- Light-duty: For retail and basic office use
- Removable, leaves no residue
- Can also be used on low-profile carpets
- Protected with Sign Muscle® Coating
- Slip-resistant
- ASTM D-2047 certified for static friction

#### Why TexWalk?

TexWalk is ideal for eye-catching, temporary applications where short-term messaging is important.

### Temp-Step™

Up-to 12 Month Use



Smooth Surface



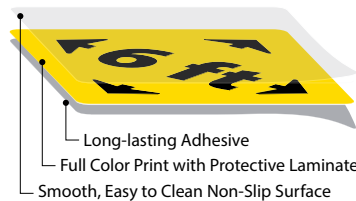
- Medium-Duty: For light manufacturing, industrial and medium foot traffic retail applications
- Residue free removal for up-to 180 days
- Adheres to a wide variety of smooth surfaces
- Slip-resistant
- UL 410 rated for slip resistance

#### Why Temp-Step?

Temp-Step is ideal for conveying eye-catching messages, in medium length applications with increased foot traffic.

### Walk-On™ (Smooth)

12+ Month Use



Smooth Surface



- Heavy-Duty: For workplace/industrial applications
- Longer term indoor use
- Adheres to a wide variety of smooth surfaces with superior performance on sealed concrete
- Smooth semi-gloss surface is easy to clean
- UL 410 rated for slip resistance

#### Why Walk-On™ Smooth?

High-performance adhesive, easy-to-clean, and ideal for heavy-duty workplace and industrial applications. Designed for areas with frequent/continuous foot traffic.

### Walk-On™ (Textured)

12+ Month Use



Textured Surface



- Heavy-Duty: For workplace/industrial applications including motorized vehicles
- Longer term indoor use
- Adheres to a wide variety of smooth surfaces with superior performance on sealed concrete
- ASTM D-2047 certified for static friction

#### Why Walk-On™ Textured?

Ideal for heavy-duty workplace and industrial applications with higher levels of continuous foot traffics and motorized forklifts and pallets jacks.

\*All materials will withstand periodic cleaning with floor scrubbers.



## Social Distancing Floor Diamonds



TexWalk® 11.75 x 11.75 WFS79TXYL  
 Temp-Step™ 12 x 12 WFS79AYL  
 Walk-On™ Smooth 12 x 12 WFSM79YL  
 Walk-On™ Textured 12 x 12 WFS79YL

TexWalk® 11.75 x 11.75 WFS79TXRD  
 Temp-Step™ 12 x 12 WFS79ARD  
 Walk-On™ Smooth 12 x 12 WFSM79RD  
 Walk-On™ Textured 12 x 12 WFS79RD

TexWalk® 11.75 x 11.75 WFS71TX  
 Temp-Step™ 12 x 12 WFS71A  
 Walk-On™ Smooth 12 x 12 WFSM71  
 Walk-On™ Textured 12 x 12 WFS71



*Bilingual*

TexWalk® 11.75 x 11.75 WFS71TXBL  
 Temp-Step™ 12 x 12 WFS71ABL  
 Walk-On™ Smooth 12 x 12 WFSM71BL  
 Walk-On™ Textured 12 x 12 WFS71BL

TexWalk® 11.75 x 11.75 WFS71TXRD  
 Temp-Step™ 12 x 12 WFS71ARD  
 Walk-On™ Smooth 12 x 12 WFSM71RD  
 Walk-On™ Textured 12 x 12 WFS71RD

TexWalk® 11.75 x 11.75 WFS96TXBL  
 Temp-Step™ 12 x 12 WFS96ABL  
 Walk-On™ Smooth 12 x 12 WFSM96BL  
 Walk-On™ Textured 12 x 12 WFS96BL



*Bilingual*



*Bilingual*

TexWalk® 11.75 x 11.75 WFS96TXRD  
 Temp-Step™ 12 x 12 WFS96ARD  
 Walk-On™ Smooth 12 x 12 WFSM96RD  
 Walk-On™ Textured 12 x 12 WFS96RD

TexWalk® 11.75 x 11.75 WFS96TXYE  
 Temp-Step™ 12 x 12 WFS96AYE  
 Walk-On™ Smooth 12 x 12 WFSM96YE  
 Walk-On™ Textured 12 x 12 WFS96YE



## Social Distancing Floor Squares



			<i>Bilingual</i>		
TexWalk®	11.75 x 11.75	WFS95TXRD			
Temp-Step™	12 x 12	WFS95ARD			
Walk-On™ Smooth	12 x 12	WFSM95RD			
Walk-On™ Textured	12 x 12	WFS95RD			

			<i>Bilingual</i>		
TexWalk®	11.75 x 11.75	WFS95TXYE			
Temp-Step™	12 x 12	WFS95AYE			
Walk-On™ Smooth	12 x 12	WFSM95YE			
Walk-On™ Textured	12 x 12	WFS95YE			

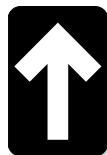
TexWalk®	11.75 x 11.75	WFS72TX			
Temp-Step™	12 x 12	WFS72A			
Walk-On™ Smooth	12 x 12	WFSM72			
Walk-On™ Textured	12 x 12	WFS72			



			<i>Bilingual</i>		
TexWalk®	11.75 x 11.75	WFS73TX			
Temp-Step™	12 x 12	WFS73A			
Walk-On™ Smooth	12 x 12	WFSM73			
Walk-On™ Textured	12 x 12	WFS73			

			<i>Bilingual</i>		
TexWalk®	11.75 x 11.75	WFS97TX			
Temp-Step™	12 x 12	WFS97A			
Walk-On™ Smooth	12 x 12	WFSM97			
Walk-On™ Textured	12 x 12	WFS97			

## Directional Floor Arrows



TexWalk®	WFS85TXBK	WFS85TXBL	WFS85TXGR	WFS85TXRD	WFS85TXYL	6 x 4 10/Pk
Temp-Step™	WFS85ABK	WFS85ABL	WFS85AGR	WFS85ARD	WFS85AYL	6 x 4 10/Pk
Walk-On™ Smooth	WFSM85BK	WFSM85BL	WFSM85GR	WFSM85RD	WFSM85YL	6 x 4 10/Pk
Walk-On™ Textured	WFS85BK	WFS85BL	WFS85GR	WFS85RD	WFS85YL	6 x 4 10/Pk

# Social Distancing Floor Rectangles



TexWalk® 7.63 x 19.63 WFS74TX  
 Temp-Step™ 8 x 20 WFS74A  
 Walk-On™ Smooth 8 x 20 WFSM74  
 Walk-On™ Textured 8 x 20 WFS74



TexWalk® 7.63 x 19.63 WFS77TX  
 Temp-Step™ 8 x 20 WFS77A  
 Walk-On™ Smooth 8 x 20 WFSM77  
 Walk-On™ Textured 8 x 20 WFS77



TexWalk® 7.63 x 19.63 WFS89TXBL  
 Temp-Step™ 8 x 20 WFS89ABL  
 Walk-On™ Smooth 8 x 20 WFSM89BL  
 Walk-On™ Textured 8 x 20 WFS89BL



TexWalk® 7.63 x 19.63 WFS89TXGR  
 Temp-Step™ 8 x 20 WFS89AGR  
 Walk-On™ Smooth 8 x 20 WFSM89GR  
 Walk-On™ Textured 8 x 20 WFS89GR



TexWalk® 7.63 x 19.63 WFS89TXYE  
 Temp-Step™ 8 x 20 WFS89AYE  
 Walk-On™ Smooth 8 x 20 WFSM89YE  
 Walk-On™ Textured 8 x 20 WFS89YE



TexWalk® 7.63 x 19.63 WFS89TXRD  
 Temp-Step™ 8 x 20 WFS89ARD  
 Walk-On™ Smooth 8 x 20 WFSM89RD  
 Walk-On™ Textured 8 x 20 WFS89RD



TexWalk® 7.63 x 19.63 WFS92TXBL  
 Temp-Step™ 8 x 20 WFS92ABL  
 Walk-On™ Smooth 8 x 20 WFSM92BL  
 Walk-On™ Textured 8 x 20 WFS92BL



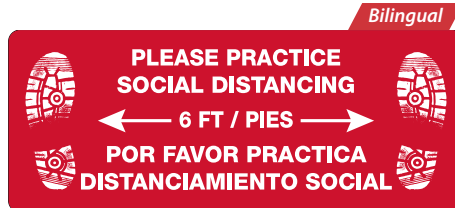
TexWalk® 7.63 x 19.63 WFS92TXGR  
 Temp-Step™ 8 x 20 WFS92AGR  
 Walk-On™ Smooth 8 x 20 WFSM92GR  
 Walk-On™ Textured 8 x 20 WFS92GR



TexWalk® 7.63 x 19.63 WFS92TXRD  
 Temp-Step™ 8 x 20 WFS92ARD  
 Walk-On™ Smooth 8 x 20 WFSM92RD  
 Walk-On™ Textured 8 x 20 WFS92RD



TexWalk® 7.63 x 19.63 WFS92TXYE  
 Temp-Step™ 8 x 20 WFS92AYE  
 Walk-On™ Smooth 8 x 20 WFSM92YE  
 Walk-On™ Textured 8 x 20 WFS92YE



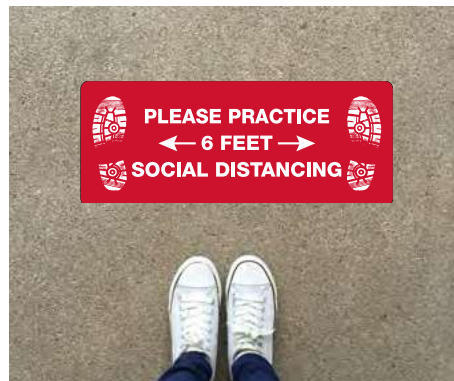
TexWalk® 7.63 x 19.63 WFS98TX  
 Temp-Step™ 8 x 20 WFS98A  
 Walk-On™ Smooth 8 x 20 WFSM98  
 Walk-On™ Textured 8 x 20 WFS98



TexWalk® 7.63 x 19.63 WFS75TX  
 Temp-Step™ 8 x 20 WFS75A  
 Walk-On™ Smooth 8 x 20 WFSM75  
 Walk-On™ Textured 8 x 20 WFS75



TexWalk® 7.63 x 19.63 WFS76TX  
 Temp-Step™ 8 x 20 WFS76A  
 Walk-On™ Smooth 8 x 20 WFSM76  
 Walk-On™ Textured 8 x 20 WFS76





## Social Distancing Floor Circles



TexWalk®	WFS99TX	
TexWalk®	WFS99TX10	10pk
Temp-Step™	WFS99A	
Temp-Step™	WFS99A10	10pk
Walk-On™ Smooth	WFSM99	
Walk-On™ Smooth	WFSM9910	10pk
Walk-On™ Textured	WFS99	
Walk-On™ Textured	WFS9910	10pk



TexWalk®	WFS83TXRD	
TexWalk®	WFS83TXRD10	10pk
Temp-Step™	WFS83ARD	
Temp-Step™	WFS83ARD10	10pk
Walk-On™ Smooth	WFSM83RD	
Walk-On™ Smooth	WFSM83RD10	10pk
Walk-On™ Textured	WFS83RD	
Walk-On™ Textured	WFS83RD10	10pk



TexWalk®	WFS83TXYL	
TexWalk®	WFS83TXYL10	10pk
Temp-Step™	WFS83AYL	
Temp-Step™	WFS83AYL10	10pk
Walk-On™ Smooth	WFSM83YL	
Walk-On™ Smooth	WFSM83YL10	10pk
Walk-On™ Textured	WFS83YL	
Walk-On™ Textured	WFS83YL10	10pk



TexWalk®	WFS86TXRD	
TexWalk®	WFS86TXRD10	10pk
Temp-Step™	WFS86ARD	
Temp-Step™	WFS86ARD10	10pk
Walk-On™ Smooth	WFSM86RD	
Walk-On™ Smooth	WFSM86RD10	10pk
Walk-On™ Textured	WFS86RD	
Walk-On™ Textured	WFS86RD10	10pk



TexWalk®	WFS86TXGR	
TexWalk®	WFS86TXGR10	10pk
Temp-Step™	WFS86AGR	
Temp-Step™	WFS86AGR10	10pk
Walk-On™ Smooth	WFSM86GR	
Walk-On™ Smooth	WFSM86GR10	10pk
Walk-On™ Textured	WFS86GR	
Walk-On™ Textured	WFS86GR10	10pk



TexWalk®	WFS86TXYE	
TexWalk®	WFS86TXYE10	10pk
Temp-Step™	WFS86AYE	
Temp-Step™	WFS86AYE10	10pk
Walk-On™ Smooth	WFSM86YE	
Walk-On™ Smooth	WFSM86YE10	10pk
Walk-On™ Textured	WFS86YE	
Walk-On™ Textured	WFS86YE10	10pk

## 3M Edge Sealer

Sealing the edges of adhesive-backed floor signs minimizes the destructive effects of rigorous use or prolonged exposure to environmental conditions and extends the life of the sign by creating a long-lasting seal between the sign and the floor.

- Size: 8 oz. can
- Color: clear
- Recommended application temperature 50° to 100° F
- Apply to edges with provided dauber or ¼" brush
- One 8 oz. can seals the edges of up to 75 8" floor signs



ITEM NO.  
WFSGUARD

# Social Distancing Floor Markings



TexWalk®	WFS88TX	
TexWalk®	WFS88TX10	10pk
Temp-Step™	WFS88A	
Temp-Step™	WFS88A10	10pk
Walk-On™ Smooth	WFSM88	
Walk-On™ Smooth	WFSM8810	10pk
Walk-On™ Textured	WFS88	
Walk-On™ Textured	WFS8810	10pk



TexWalk®	WFS88TXSP	
TexWalk®	WFS88TXSP10	10pk
Temp-Step™	WFS88ASP	
Temp-Step™	WFS88ASP10	10pk
Walk-On™ Smooth	WFSM88SP	
Walk-On™ Smooth	WFSM88SP10	10pk
Walk-On™ Textured	WFS88SP	
Walk-On™ Textured	WFS88SP10	10pk



TexWalk®	WFS87TYE	
TexWalk®	WFS87TYE10	10pk
Temp-Step™	WFS87AYE	
Temp-Step™	WFS87AYE10	10pk
Walk-On™ Smooth	WFSM87YE	
Walk-On™ Smooth	WFSM87YE10	10pk
Walk-On™ Textured	WFS87YE	
Walk-On™ Textured	WFS87YE10	10pk



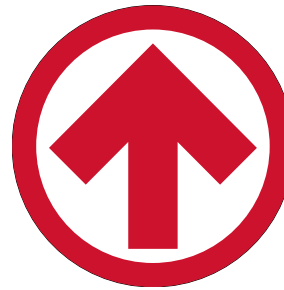
TexWalk®	WFS87TYYESP	
TexWalk®	WFS87TYYESP10	10pk
Temp-Step™	WFS87AYESP	
Temp-Step™	WFS87AYESP10	10pk
Walk-On™ Smooth	WFSM87YESP	
Walk-On™ Smooth	WFSM87YESP10	10pk
Walk-On™ Textured	WFS87YESP	
Walk-On™ Textured	WFS87YESP10	10pk



TexWalk®	WFS87TXGR	
TexWalk®	WFS87TXGR10	10pk
Temp-Step™	WFS87AGR	
Temp-Step™	WFS87AGR10	10pk
Walk-On™ Smooth	WFSM87GR	
Walk-On™ Smooth	WFSM87GR10	10pk
Walk-On™ Textured	WFS87GR	
Walk-On™ Textured	WFS87GR10	10pk



Temp-Step™	WFS87AGRSP	
Temp-Step™	WFS87AGRSP10	10pk
TexWalk®	WFS87TXGRSP	
TexWalk®	WFS87TXGRSP10	10pk
Walk-On™ Smooth	WFSM87GRSP	
Walk-On™ Smooth	WFSM87GRSP10	10pk
Walk-On™ Textured	WFS87GRSP	
Walk-On™ Textured	WFS87GRSP10	10pk



TexWalk®	WFS84TXRD	
TexWalk®	WFS84TXRD10	10pk
Temp-Step™	WFS84ARD	
Temp-Step™	WFS84ARD10	10pk
Walk-On™ Smooth	WFSM84RD	
Walk-On™ Smooth	WFSM84RD10	10pk
Walk-On™ Textured	WFS84RD	
Walk-On™ Textured	WFS84RD10	10pk



TexWalk®	WFS84TXYL	
TexWalk®	WFS84TXYL10	10pk
Temp-Step™	WFS84AYL	
Temp-Step™	WFS84AYL10	10pk
Walk-On™ Smooth	WFSM84YL	
Walk-On™ Smooth	WFSM84YL10	10pk
Walk-On™ Textured	WFS84YL	
Walk-On™ Textured	WFS84YL10	10pk



TexWalk®	WFS82TX	
TexWalk®	WFS82TX10	10pk
Temp-Step™	WFS82A	
Temp-Step™	WFS82A10	10pk
Walk-On™ Smooth	WFSM82	
Walk-On™ Smooth	WFSM8210	10pk
Walk-On™ Textured	WFS82	
Walk-On™ Textured	WFS8210	10pk



TexWalk®	WFS93TX	
TexWalk®	WFS93TX10	10pk
Temp-Step™	WFS93A	
Temp-Step™	WFS93A10	10pk
Walk-On™ Smooth	WFSM93	
Walk-On™ Smooth	WFSM9310	10pk
Walk-On™ Textured	WFS93	
Walk-On™ Textured	WFS9310	10pk



TexWalk®	WFS94TX	
TexWalk®	WFS94TX10	10pk
Temp-Step™	WFS94A	
Temp-Step™	WFS94A10	10pk
Walk-On™ Smooth	WFSM94	
Walk-On™ Smooth	WFSM9410	10pk
Walk-On™ Textured	WFS94	
Walk-On™ Textured	WFS9410	10pk



# Social Distancing Floor Strips

Create a clear directive for any situation requiring social distancing. Let staff and students know where to wait to keep an appropriate distance, decreasing confusion and the transmission of airborne illness.

20"

2.25"

TexWalk®	WFS80TX	
TexWalk®	WFS80TX10	10pk
Temp-Step™	WFS80A	
Temp-Step™	WFS80A10	10pk
Walk-On™ Smooth	WFSM80	
Walk-On™ Smooth	WFSM8010	10pk
Walk-On™ Textured	WFS80	
Walk-On™ Textured	WFS8010	10pk

TexWalk®	WFS81TX	
TexWalk®	WFS81TX10	10pk
Temp-Step™	WFS81A	
Temp-Step™	WFS81A10	10pk
Walk-On™ Smooth	WFSM81	
Walk-On™ Smooth	WFSM8110	10pk
Walk-On™ Textured	WFS81	
Walk-On™ Textured	WFS8110	10pk

TexWalk®	WFS90TXGR	
TexWalk®	WFS90TXGR10	10pk
Temp-Step™	WFS90AGR	
Temp-Step™	WFS90AGR10	10pk
Walk-On™ Smooth	WFSM90GR	
Walk-On™ Smooth	WFSM90GR10	10pk
Walk-On™ Textured	WFS90GR	
Walk-On™ Textured	WFS90GR10	10pk

TexWalk®	WFS90TXYE	
TexWalk®	WFS90TXYE10	10pk
Temp-Step™	WFS90AYE	
Temp-Step™	WFS90AYE10	10pk
Walk-On™ Smooth	WFSM90YE	
Walk-On™ Smooth	WFSM90YE10	10pk
Walk-On™ Textured	WFS90YE	
Walk-On™ Textured	WFS90YE10	10pk

TexWalk®	WFS91TX	
TexWalk®	WFS91TX10	10pk
Temp-Step™	WFS91A	
Temp-Step™	WFS91A10	10pk
Walk-On™ Smooth	WFSM91	
Walk-On™ Smooth	WFSM9110	10pk
Walk-On™ Textured	WFS91	
Walk-On™ Textured	WFS9110	10pk

TexWalk®	WFS78TXRD	
TexWalk®	WFS78TXRD10	10pk
Temp-Step™	WFS78ARD	
Temp-Step™	WFS78ARD10	10pk
Walk-On™ Smooth	WFSM78RD	
Walk-On™ Smooth	WFSM78RD10	10pk
Walk-On™ Textured	WFS78RD	
Walk-On™ Textured	WFS78RD10	10pk

TexWalk®	WFS78TXYL	
TexWalk®	WFS78TXYL10	10pk
Temp-Step™	WFS78AYL	
Temp-Step™	WFS78AYL10	10pk
Walk-On™ Smooth	WFSM78YL	
Walk-On™ Smooth	WFSM78YL10	10pk
Walk-On™ Textured	WFS78YL	
Walk-On™ Textured	WFS78YL10	10pk

# Projector & Illness Prevention Lenses

Communicate important safety messages in a highly visible and impactful way. Great for loading docks, manufacturing floors, retail locations and more.

- Perfect for high traffic areas (pedestrian, forklift & other)
- Zero wear and tear vs. traditional floor signs
- Portable & easy to install
- Fan cooled technology prevents overheating
- Projects up to 262 ft
- Remote control and mounting kit included



**Custom Lenses Available\***

\*21 day lead time from time of order



**Wait Here**  
Projector & Lens VSP5  
Lens Only VSPL5



**6 Feet**  
Projector & Lens VSP6  
Lens Only VSPL6



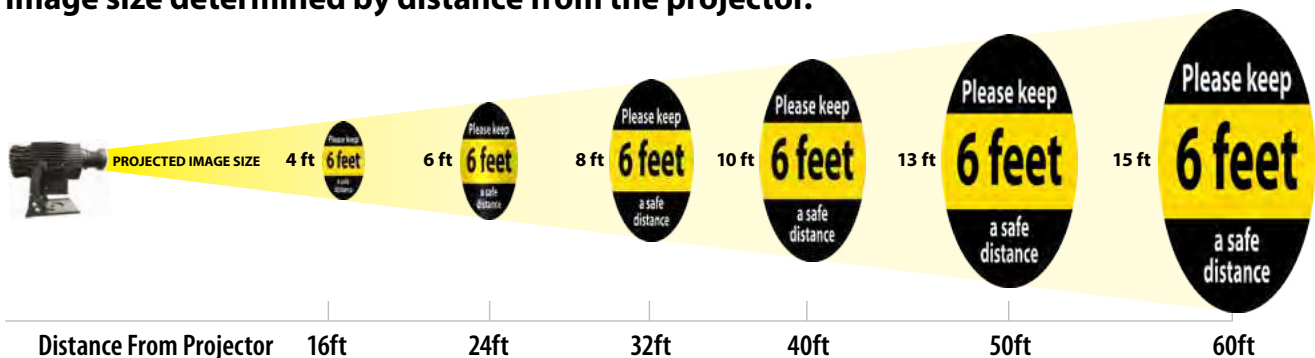
**Social Distancing**  
Projector & Lens VSP7  
Lens Only VSPL7



**No Handshakes**  
Projector & Lens VSP8  
Lens Only VSPL8

## Distance Chart

Image size determined by distance from the projector.

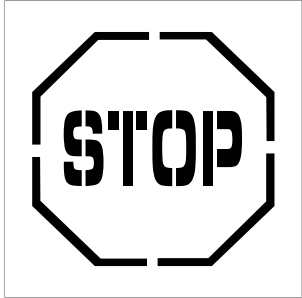




# Stencils

Use reusable stencils to mark sidewalks, parking lots or other areas to quickly and easily display lasting messages.

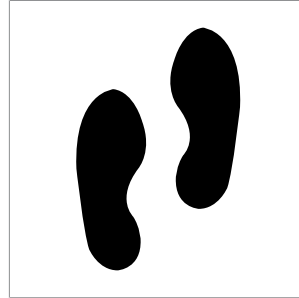
SIZE  
24" x 24"



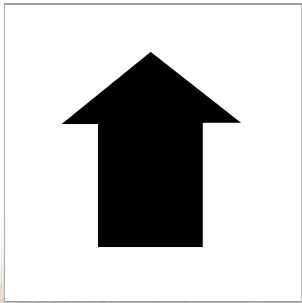
PMS203



PMS209



PMS229



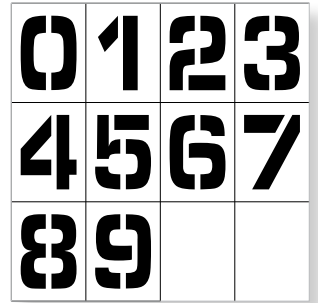
PMS221



PMS55



PMS56



PMN12  
Stencil Number Set 0-9

ITEM NO	CHARACTER HEIGHT
PMN12	12"
PMN36	36"



# Distancing & Crowd Control

Waterproof and wear resistant 6 mil vinyl tape applies easily to clean, smooth, dry surfaces with a synthetic rubber resin adhesive and has a temp resistance of -20°F to 175°F. Perfect for:

- Color-coding
- Aisle marking
- Duct sealing
- Abrasion protection
- Joint sealing
- Pipe wrapping
- Light bundling
- Packing
- Safety marking
- Social Distancing











## Solid Color Safety Tapes

COLOR	SIZE	PART NO.
BLACK	2" x 108'	T214
	3" x 108'	T244
WHITE	2" x 108'	T206
	3" x 108'	T236
ORANGE	2" x 108'	T209
	3" x 108'	T239
BLUE	2" x 108'	T210
	3" x 108'	T240
GREEN	2" x 108'	T208
	3" x 108'	T238
YELLOW	2" x 108'	T205
	3" x 108'	T235
RED	2" x 108'	T204
	3" x 108'	T234
BROWN	2" x 108'	T212
	3" x 108'	T242



## Striped Safety Tapes

COLOR	SIZE	PART NO.
	2" x 54'	T20218
	2" x 108'	T20236
	3" x 54'	T22018
	3" x 108'	T22036
	2" x 54'	T20718
	2" x 108'	T20736
	2" x 54'	T20118
	2" x 108'	T20136
	3" x 54'	T22118
	3" x 108'	T22136
	2" x 54'	T20318
	2" x 108'	T20336
	3" x 54'	T22318
	2" x 54'	T20418
	2" x 108'	T20436
	3" x 54'	T22418
	2" x 54'	T22436
	2" x 108'	T20918
	3" x 54'	T20936
	2" x 108'	T22918
	2" x 54'	T20818
	2" x 108'	T20836
	3" x 54'	T22818
	3" x 108'	T22836

## Marking Tape Floor Applicator

Mark specific areas to promote safety.

- Stable, stand-alone design
- Holds up to a 4" x 180' roll of floor marking or a 4" x 150' roll of pavement marking tape
- Large wheel base for smooth tape placement
- Heavy duty construction
- Minimal assembly required

PART NO.
FTA01



# Distancing & Crowd Control

Built to withstand industrial traffic, 30 & 50 mil thick floor marking tapes provide a durable solution that goes down easy and cleans up just as well.

- Designed for long-term floor marking
- Smooth, easy to clean, slip resistant
- Dual beveled edges allow industrial wheels to roll over smoothly (50 mil option)
- Leaves no residue when removed
- Faster to install than paint, with zero downtime

## Durable Floor Tape

- 30 mil thickness
- Material: Vinyl



COLOR	PART NO.	SIZE
YELLOW	DT2Y	2" X 100'
	DT4Y	4" X 100'
RED	DT2R	2" X 100'
	DT4R	4" X 100'

COLOR	PART NO.	SIZE
BLUE	DT2B	2" X 100'
	DT4B	4" X 100'
GREEN	DT2G	2" X 100'
	DT4G	4" X 100'

## Heavy-Duty Floor Tape

- 50 mil thickness
- Material: PVC



COLOR	PART NO.	SIZE
YELLOW	HDT2Y	2" X 100'
	HDT3Y	3" X 100'
	HDT4Y	4" X 100'
RED	HDT2R	2" X 100'
	HDT3R	3" X 100'
	HDT4R	4" X 100'
BLUE	HDT2B	2" X 100'
	HDT3B	3" X 100'
	HDT4B	4" X 100'
GREEN	HDT2G	2" X 100'
	HDT3G	3" X 100'
	HDT4G	4" X 100'

COLOR	PART NO.	SIZE
BLACK	HDT2BK	2" X 100'
	HDT3BK	3" X 100'
	HDT4BK	4" X 100'
ORANGE	HDT2OR	2" X 100'
	HDT3OR	3" X 100'
	HDT4OR	4" X 100'
YELLOW BLACK STRIPE	HDT2BKYL	2" X 100'
	HDT3BKYL	3" X 100'
	HDT4BKYL	4" X 100'

## Floor Markings

Ideal for directing foot traffic and creating pathways.

- Includes 25 per pack
- 50 mil thick for long-term application & use
- Designed to withstand industrial traffic
- Rubber based pressure sensitive adhesive
- Service temp range -10°F to 150°F
- Application temp range 40°F to 150°F

## T-Markers

PART NO.	COLOR
LN125	Red
LN126	Yellow
LN127	Blue
LN128	Green
LN129	Black w/ White Stripe
LN130	Black w/ Yellow Stripe



6" x 6" x 2"

## Corner Marker Angles

PART NO.	COLOR
LN119	Red
LN120	Yellow
LN121	Blue
LN122	Green
LN123	Black w/ White Stripe
LN124	Black w/ Yellow Stripe



6" x 6" x 2"

## Marking Dots

PART NO.	COLOR
LN131	Red
LN132	Yellow
LN133	Blue
LN134	Green
LN135	White



3.5" Dia.

## Footprints

PART NO.	COLOR
LN114	Red
LN115	Yellow
LN116	Blue
LN117	Green
LN118	White



3.5" x 9.5"

# A-Frame Signs & Stands

## Signage for Outdoor Use

NMC's Deluxe A-Frame Sidewalk & Parking lot signs are ideal for directing pedestrian and motorized traffic.

- Stand Measures 45" x 25"
- Sign Measures 36" x 24"
- Includes one sign
- Double-sided (stand can hold two signs, one on each side) –additional signs sold separately
- High-density impact plastic
- Sign made of corrugated plastic (sign is removable)
- No tools, tape or screws needed –simply fold-out and go
- Custom messages available



SFS102C Shown - Dry Erase Insert



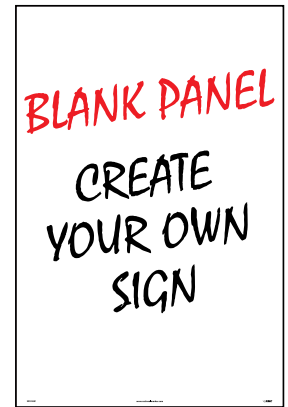
Sign & Stand: SFS114C-KIT  
Sign Only: SFS114C



Sign & Stand: SFS115C-KIT  
Sign Only: SFS115C



Sign & Stand: SFS116C-KIT  
Sign Only: SFS116C



SFS102C



Sign & Stand: SFS110C-KIT  
Sign Only: SFS110C



Sign & Stand: SFS111C-KIT  
Sign Only: SFS111C



Sign & Stand: SFS112C-KIT  
Sign Only: SFS112C



Sign & Stand: SFS113C-KIT  
Sign Only: SFS113C

## Double Sided, Reversible Floor Signs

Two signs in one! Free-standing, double-sided floor signs provide temporary identification for short-term hazards.



### MATERIAL

19 x 12 Corrugated Polyethylene

FS46 Shown



**Cone Top Signs & Cones**

Increase the effectiveness of cones with signs designed to fit most traffic cones.

10.375 X 12.625
Material
Rigid Plastic



Cone & Cone Top Sign sold separately



CS29



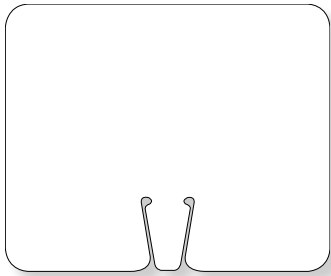
CS30



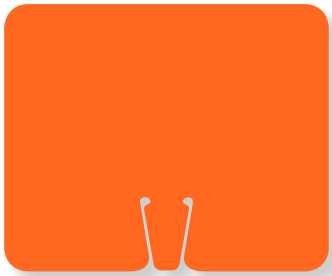
CS31



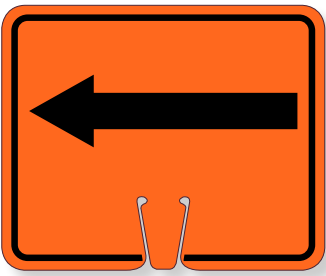
CS15



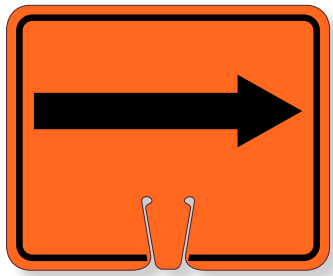
CS2



CS1



CS4



CS5



CS8



CS9



CS24



CS14



TPC2

ITEM NO.	SIZE
TPC2	Orange, 18 x 10.5. 1/case

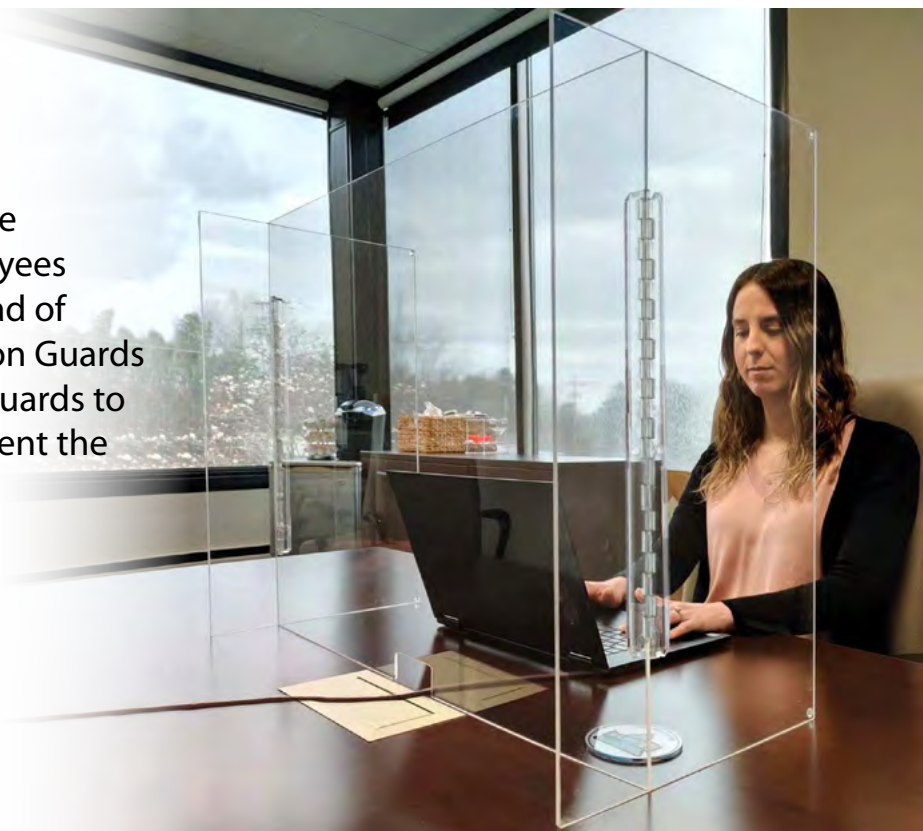


**CUSTOM LEGENDS AVAILABLE**  
**Call us today to get started!**

# Work Station Guards

Open office concepts present unique challenges as employers and employees are sensitive to controlling the spread of communicable diseases. Work Station Guards provide a stop-gap solution. Place guards to help keep workers healthy and prevent the spread of viruses.

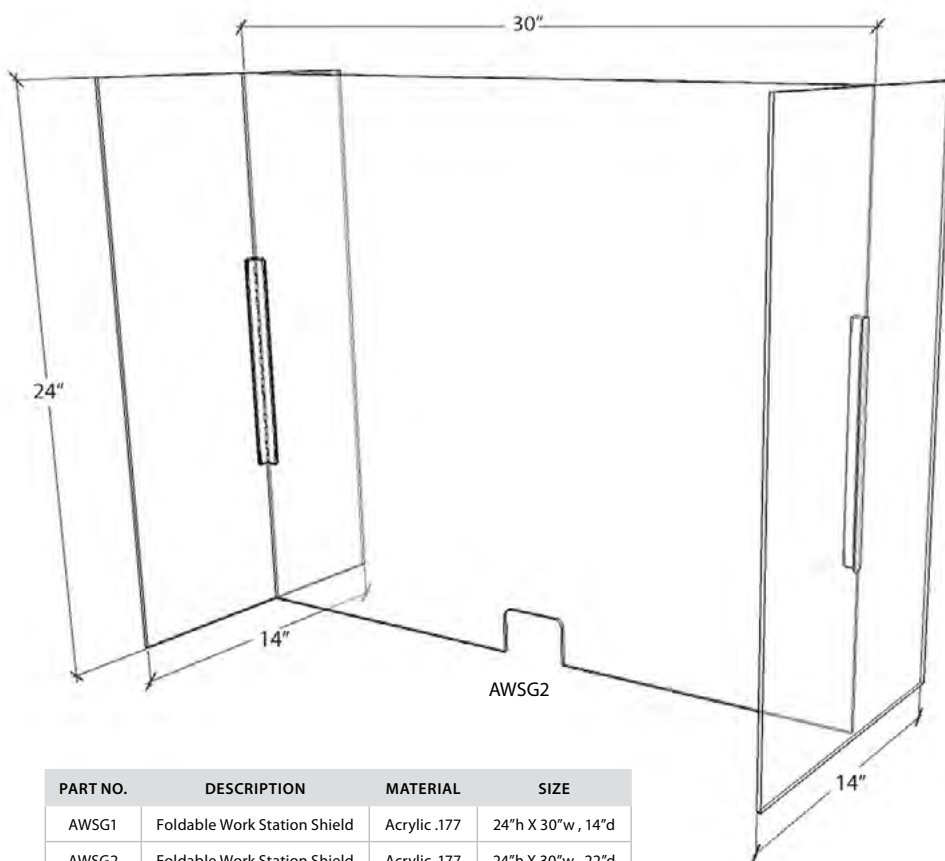
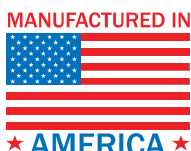
- Made of acrylic
- Easy to clean
- Portable/storable
- Sturdy 3-sided hinge design
- Fully customizable



## Custom Solutions Available

Our Customer Support Team is here to help you every step of the way.

**Reach out today to get started!**



# Acrylic PPE Dispensers

Workers need to use personal safety protection everyday, and they need easy access to PPE on site with convenient dispensers.

- Widest selection of standard dispensers
- Convenient and economical
- Superior acrylic quality
- No Minimums
- Most Styles include free identification labels



## Glove Dispenser

Comes in 3 sizes to accommodate any range of needs.

- 15 x 10.75 holds 3 boxes of gloves
- 10 x 10.75 holds 2 boxes of gloves
- 5 x 10.75 holds 1 box of gloves
- Table or wall mount

ITEM NO	SIZE
AGBT	15 x 10.75
AGBD	10 x 10.75
AGBS	5 x 10.75



AGBT

## Visitor Spec Dispenser

- Features bottom door to keep glasses in place
- Dimensions: 1 x 4
- Holds up to approx. 20 pairs
- Table or wall mount



ASG-D

## Miscellaneous PPE Dispenser

Store a wide range of PPE supplies such as bouffants, booties, gloves, earplugs, etc.

- Size: 10 x 10 x 10
- 4" round opening in front for easy access
- Table or wall mount



ADB

## Mini Multi-Use Dispenser with Cover

Easy to store PPE dispenser protects contents with a full cover.

- Size: 12 x 6.5
- Lid protects PPE from airborne contaminants, dust & debris
- Table or wall mount



ADM1



## CUSTOMIZE YOUR DISPENSERS

Get your MESSAGE noticed with CUSTOM designed acrylic and label options!

Get started, call us today!



# Biohazard

Biohazard areas can be dangerous due to many hazards not being visible to the human eye. Clearly mark biohazard areas with proper identification products including floor signs, labels, signs, and barricade tape.

## Double-Sided Floor Signs

- Made of lightweight 4 mm corrugated polyethylene
- Printed on four sides, one message on the outside and another message on the inside
- Water-proof
- Folds easily for convenient storage



FS37



## Signs & Labels

Includes the universally recognized biohazard symbol and meet OSHA's marking requirement in standard 1910.1030 for bloodborne pathogens.



PSP 1 x 3, 500/Roll WOL6



PSP 1 x 3, 500/Roll WOL7



PSV 7 x 7 S92P  
RB 7 x 7 S92R



PSV 7 x 7 S93P  
RB 7 x 7 S93R



PSV 4 x 4, 5/Pk S52AP  
PSV 7 x 7 S52P  
RB 7 x 7 S52R  
PSP 3 x 3, 500/Roll S52RL



PSV 10 x 18 SPSA52P  
RB 10 x 18 SPSA52R

MATERIALS
Pressure Sensitive Vinyl (PSV)
Pressure Sensitive Paper (PSP)
Rigid Plastic (RB)

## Tags

The use of tags is permitted for compliance, as outlined in OSHA standard 1910.145. Biohazard tags measuring 6" x 3" are versatile when labels may not be the ideal solution.



RPT54

## Barricade Tape

Biohazard barricade tape measures 3" by 1000-ft long with a continuous repeat of the text shown below.



PT40

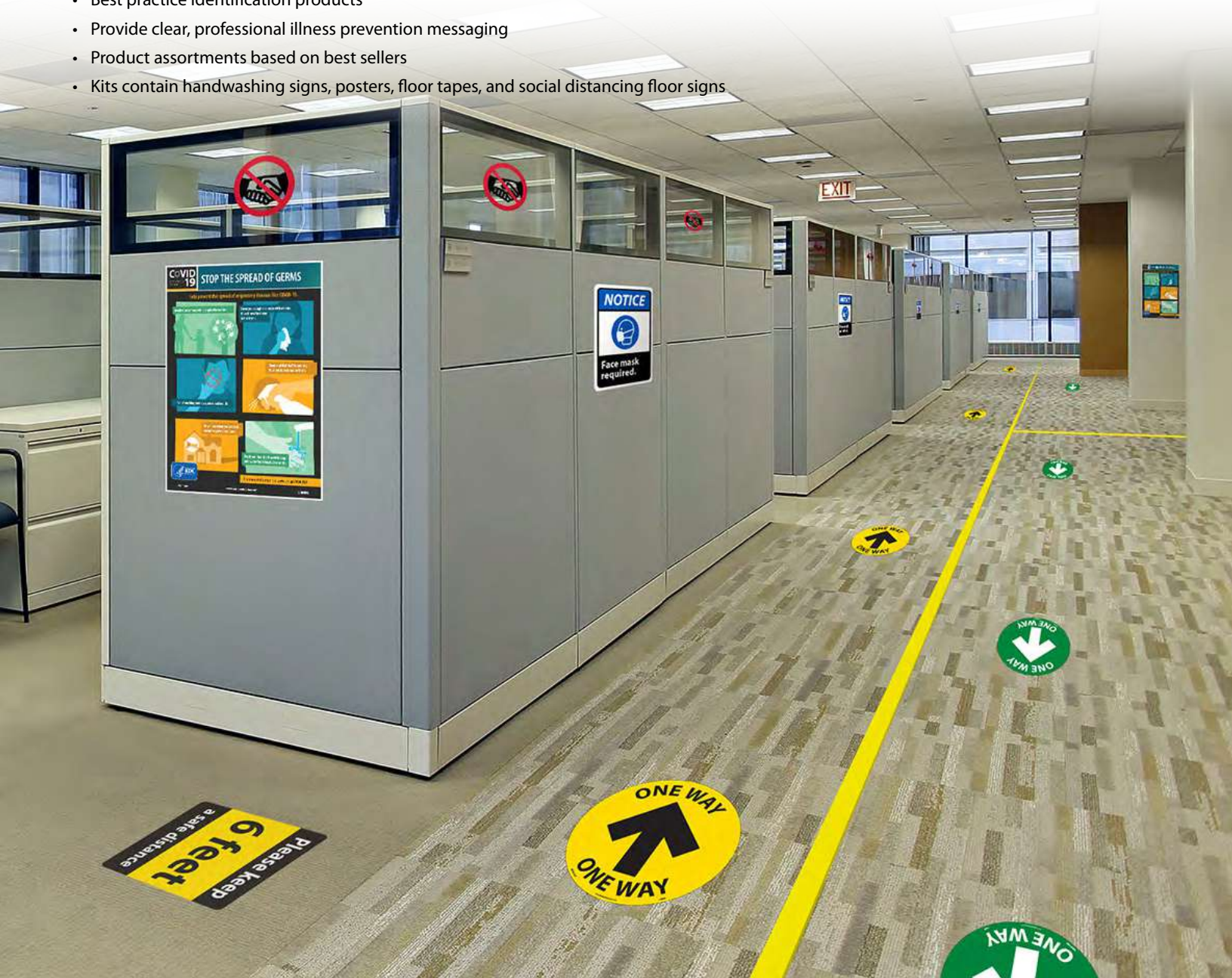
# Illness Prevention ID Kits

## Key products kitted to address marking needs throughout your facility

Kits provide the essentials you need to begin properly identifying your facility as the doors open to workers, customers, contractors, vendors, students, and more. Choose from three kits geared towards small, medium, or large facilities.

Each kit contains applicable products in a variety of quantities to communicate important health and safety measures from lobby to loading dock.

- Best practice identification products
- Provide clear, professional illness prevention messaging
- Product assortments based on best sellers
- Kits contain handwashing signs, posters, floor tapes, and social distancing floor signs



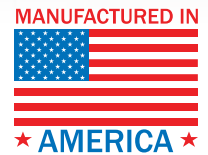
# From Lobby to Loading Dock

## A Kit for All Types & Sizes

Here's where to start. Three ready-to-ship Illness Prevention Kits are geared towards small, medium, or large facilities. Don't see the perfect kit? Kits can be customized to your specific need – this includes a variety of product quantities based on your type of workplace, be it a traditional manufacturing facility, office, school, university, place of worship or other.

### Small Kit

ITEM NO.
BWK01



- (1) 5/Pack of 6" dia. clear PSV, NO HANDSHAKE labels
- (1) 10 x 14 Rigid Plastic, NOTICE PRACTICE SOCIAL DISTANCING sign
- (1) 14 x 10 PSV, NOTICE FACE MASK REQUIRED sign
- (2) 5/Packs of 3 x 5 PSV, NOTICE WASH YOUR HANDS BEFORE RETURNING TO WORK labels
- (4) 7 x 10 Rigid Plastic, WASH YOUR HANDS signs
- (2) 18 x 24 Heavy-Duty Poster Paper, WASH YOUR HANDS posters
- (1) 24 x 18 Heavy-Duty Poster Paper, STOP THE SPREAD OF GERMS poster
- (2) Rolls of 2 x 108' Yellow 6-mil Floor Tape
- (2) 12 x 12 SOCIAL DISTANCING floor signs in Walk-On™ material
- (2) 12 x 12 PLEASE KEEP A SAFE DISTANCE floor signs in Walk-On™ material

## Medium Kit

ITEM NO.
BWK02



- (2) 5/Packs of 6" dia. Clear PSV, NO HANDSHAKE labels
- (2) 10 x 14 Rigid Plastic, NOTICE PRACTICE SOCIAL DISTANCING signs
- (2) 5/Packs of 3 x 5 PSV, NOTICE WASH YOUR HANDS BEFORE RETURNING TO WORK labels
- (6) 7 x 10 Rigid Plastic, WASH YOUR HANDS signs
- (4) 14 x 10, PSV, NOTICE FACE MASK REQUIRED signs
- (1) 5/Pack of 18 x 12, Paper, USE OF CLOTH FACE COVERINGS posters
- (1) 5/Pack of 18 x 12, Paper, GUIDELINES FOR WEARING A MASK posters
- (4) 12 x 18 Unrippable Vinyl, WASH YOUR HANDS posters
- (2) 24 x 18 Heavy-Duty Poster Paper, STOP THE SPREAD OF GERMS poster
- (3) Rolls of 2 x 108' Yellow 6-mil Floor Tape
- (2) 12 x 12 SOCIAL DISTANCING floor signs in Walk-On™ material
- (2) 10pk of 2.25 x 20 THANK YOUR FOR PRACTICING SOCIAL DISTANCING floor strips in of Temp-Step™ material
- (2) 12 x 12 PLEASE KEEP A SAFE DISTANCE floor signs in Walk-On™ material
- (2) 6 x 9 Plastic HAND SANITIZING STATION 3D wall signs

## Large Kit

ITEM NO.
BWK03



- (2) 5/Packs of 6" dia. clear PSV, NO HANDSHAKE labels
- (4) 10 x 14 Rigid Plastic, NOTICE PRACTICE SOCIAL DISTANCING signs
- (4) 5/Packs of 3 x 5 Removable PSV, NOTICE WASH YOUR HANDS BEFORE RETURNING TO WORK labels
- (6) 7 x 10 Rigid Plastic, WASH YOUR HANDS signs
- (2) 14 x 10 Rigid Plastic, TEMPERATURE CHECK STATION signs
- (6) 14 x 10, PSV, NOTICE FACE MASK REQUIRED signs
- (4) 5/Packs of 18 x 12 Paper, USE OF CLOTH FACE COVERINGS posters
- (2) 5/Packs of 8 x 12 Paper, GUIDELINES FOR WEARING A MASK posters
- (2) 18 x 12 Unrippable Vinyl, WELCOME NO HAND SHAKES posters
- (2) 18 x 24 Heavy Duty Poster Paper, WASH YOUR HANDS posters
- (4) 18 x 24 Heavy Duty Poster Paper, STOP THE SPREAD OF GERMS posters
- (4) Rolls of 2 x 108' Yellow 6-mil Floor Tape
- (4) 12 x 12 SOCIAL DISTANCING floor signs in Walk-On™ material
- (3) 10pk of 2.25 x 20 THANK YOUR FOR PRACTICING SOCIAL DISTANCING floor strips in Temp-Step™ material
- (4) 12 x 12 PLEASE KEEP A SAFE DISTANCE floor signs in Walk-On™ material
- (4) 6 x 9 Plastic HAND SANITIZING STATION 3D wall signs



# THE LAST SIGN YOU WILL EVER BUY™

Sign Muscle® is Polymer Coating that preserves the life of your NMC signs and labels.



Resists Fading!



Make Clean Up Easy!



Easily Restored Like New

## Many items in this catalog include Sign Muscle® for free!

These sign and label material references include Sign Muscle®.

- PSV** Pressure Sensitive Vinyl
- PSVR** Removable Adhesive Backed Vinyl
- RB** Rigid Plastic
- AL** Aluminum

Additional products such as TexWalk® and Large Format Signs also include Sign Muscle®.

## Protection Applied Free, Guaranteed for Life!