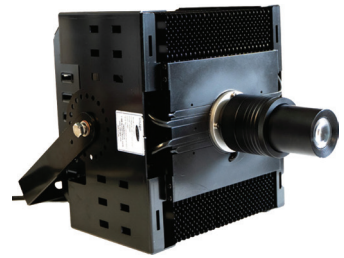


# Heavy Duty 100W & 150W Sign Projector



Manual 2025

## Package Contents

Projector, optical lens, mounting bracket, safety cable and electrical cord with standard 110 volt plug.

## Description

Heavy Duty Sign Projectors are rated for indoor or outdoor use. To project an image, a high resolution glass or metal lens is required. To order custom lens, e-mail the artwork of the desired image to [customerservice@accuformnmc.com](mailto:customerservice@accuformnmc.com). Line-art or vector files are acceptable, as are pixel files (e.g. .JPEG, .PNG, .TIFF, .PDF, etc.) 300 dpi or better.

## Safety Information

- For indoor or outdoor use.
- Prevent direct eye exposure to the light source as it may lead to injury.
- Please use caution when handling or touching the unit during and after operation, as it may heat up.
- Only use power sources that comply with local electrical and building codes and have proper grounding.

## Lens Specifications

- E-size lens
- Outer diameter (OD) - 37.5 mm
- Inner or image diameter (ID) - up to 25 mm
- Lens thickness: Up to 3 mm

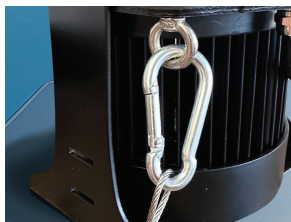
## Adjusting the Image Focus

Once the lens is successfully installed, rotate the lens clockwise or counter-clockwise until the image is in focus. Once the image is in focus, turn the lock ring clockwise until the rubber gasket is slightly compressed.



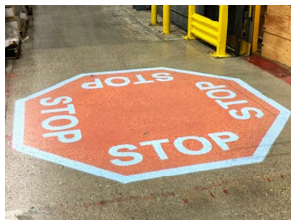
## Safety Cable Attachment

After installing the projector, secure the unit as shown at right with the provided safety cable.



## Maintenance

In dusty environments, the projectors can be dusted off with compressed air. Do not clean the lens with any chemicals or paper towels as they can damage it. If you need to wipe the lens, use a soft microfiber cloth.



## Lens Installation & Exchange

### Step 1

Unlock the lens lock ring by unscrewing it counter clockwise. Then turn the optical lens counter clockwise until it comes off.



### Step 2

Remove the metal pressure clip by squeezing together the two bent ends.

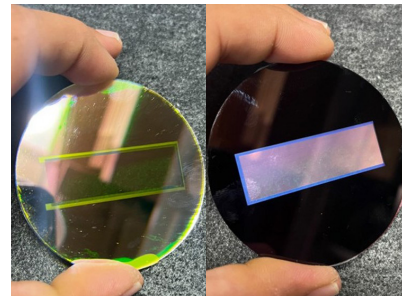
**WARNING:** Please use caution when removing or installing the pressure clip, as it may spring or jump out unexpectedly.



### Step 3

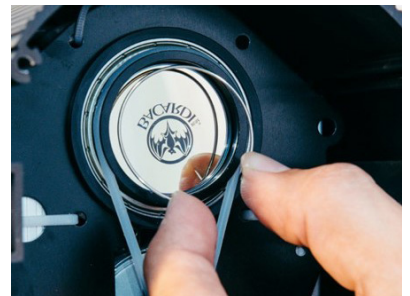
Place the lens in the lens slot with the silver reflective side down facing the LED. Image will appear inverted.

Silver Side Down - Black Side Up



### Step 4

Place the metal pressure clip on top of the lens and make sure it is pressing against the lens evenly.



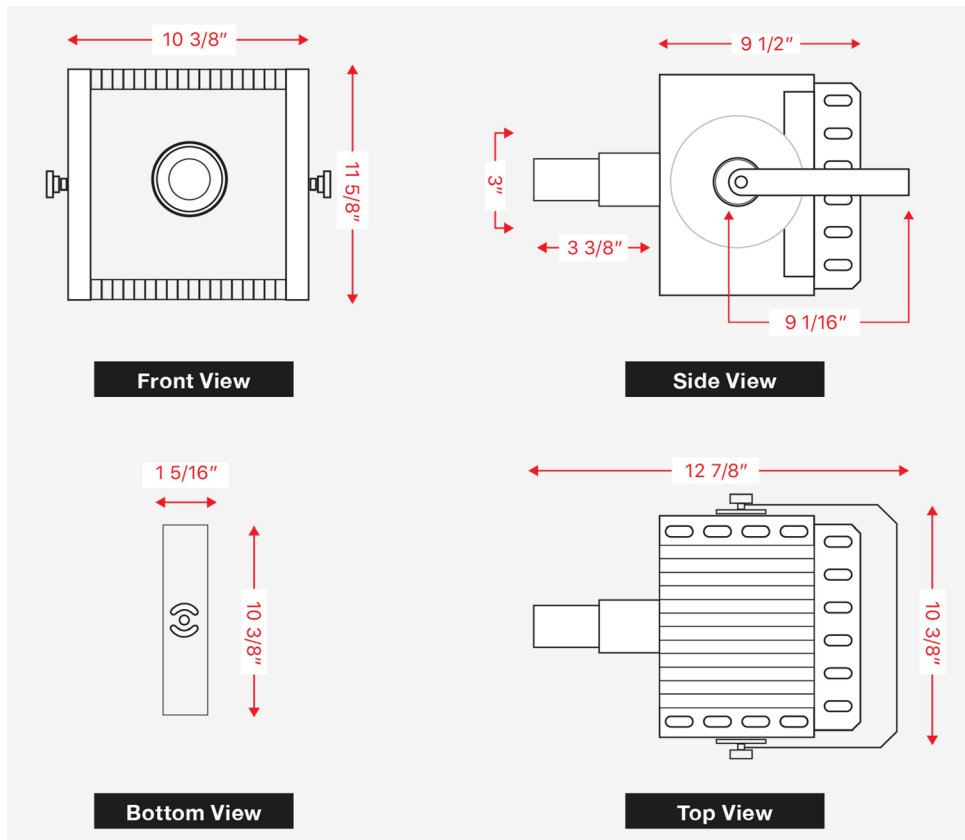
**PROJECTORS MUST BE SECURED WITH A SAFETY CABLE**

Specifications on Page 2

## Heavy Duty 100W & 150W Sign Projector

Model:	100W HD	150W HD
Power Supply:	100-277 VAC *	100-277 VAC *
Power Draw:	100W	150W
Rated Frequency:	50/60 Hz	50/60 Hz
Rated LED Life:	30,000 - 40,000 hrs	30,000 - 40,000 hrs
Color Temperature:	8,000 - 9,000 K	8,000 - 9,000 K
Luminous Flux:	9,000 lm	13,500 lm
Power Cord:	Length: 67" (1.7m)	Length: 67" (1.7m)
Temperature Range:	-40° F to 140°F (-40°C to 60°C)	-40° F to 140°F (-40°C to 60°C)
Lamp Type:	100W LED	150W LED
Product Warranty:	Five Year	Five Year
Weight:	19 pounds	19 pounds

\*US only - 240 V outside of US



## Warranty

AccuformNMC warrants its Safety Projectors to be free from defects in materials and workmanship for a period of five (5) years from the date of original purchase ("Warranty Period"). This warranty extends only to the first end-user purchaser of the product. For details, or to obtain warranty service, please contact AccuformNMC's customer service department at (800) 237-1001 or [customerservice@accuformnmc.com](mailto:customerservice@accuformnmc.com) during normal business hours.