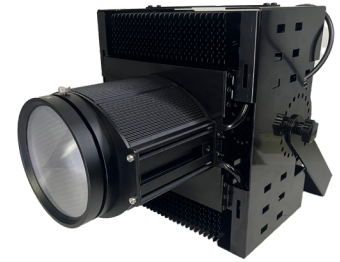


LED Line Projector

Manual 2025



Package Contents:

- LED-PRO 100W: Projector with mounting bracket and power cord
- LED-PRO 200W: Projector with mounting bracket and power cord
- PROJECTORS MUST BE SECURED WITH A SAFETY CABLE

Safety Information

- Prevent direct eye exposure to the light source.
- Please use caution when handling or touching the unit during and after operation, as it may heat up.
- Only use power sources that comply with local electrical and building codes and have proper grounding.
- Always disconnect the fixture from power before handling.
- Place your fixture at a suitable place with good airflow.
- Use only genuine spare parts for part replacement.
- Verify that all external covers and rigging hardware are securely fastened and use an approved means of secondary attachment such as a safety cable.

Mounting

Projectors come equipped with brackets for mounting and alignment. Ideally, the fixtures should be mounted perpendicular and centered above the projected line. The fixture is equipped with a mounting bracket to position the projected line.

Maintenance

In dusty environments, the projectors can be dusted off with compressed air. Do not clean the lens with any chemicals or paper towels as they can damage it. If you need to wipe the lens, use a soft microfiber cloth.

Warranty

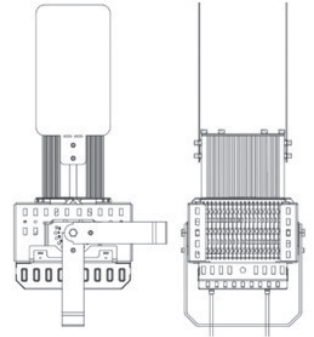
AccuformNMC warrants its Safety Projectors to be free from defects in materials and workmanship for a period of five (5) years from the date of original purchase ("Warranty Period"). This warranty extends only to the first end-user purchaser of the product. For details, or to obtain warranty service, please contact AccuformNMC's customer service department at (800) 237-1001 or customerservice@accuformnmc.com during normal business hours.

Line Limiter Option

In certain circumstances, it may be necessary to shorten the projected line on one or both sides to achieve the desired line length. Therefore, the projectors can be equipped with optional line length limiters. These are "flaps" that can be mounted on one or both sides of the projector.

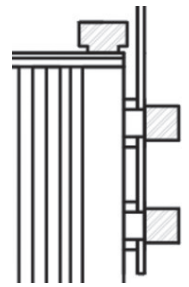
The line length is adjusted by bending the limiters in or out. Line limiters can also help to achieve a more refined line end.

Note: The minimum achievable line length is approx. 30% of the max. line length. For example, a 30ft line can be limited to approx. 10ft. These values may vary.



Mounting the line limiter(s):

- Remove the thumbscrews on the left and right side of the projector.
- Place the plastic washers between the projector and the line limiter.
- Screw the line limiter into the slot nuts.
- Line limiters can then be adjusted to your specific line length needs.



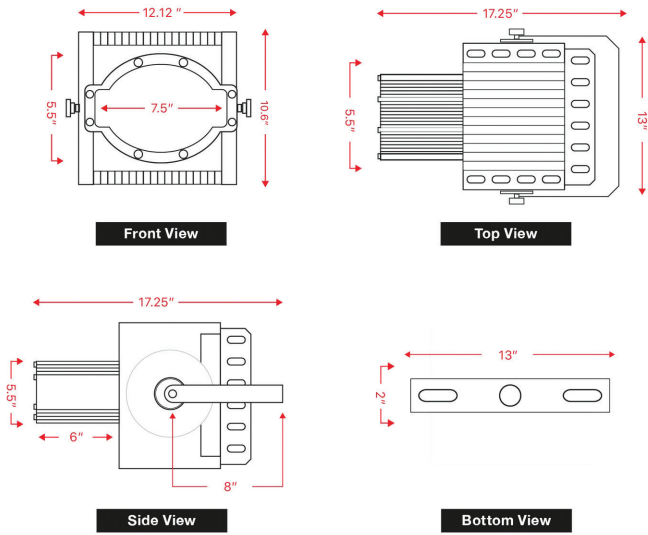
Projector Specifications

Model	150W HD
Power Supply:	100-277 VAC
Power Draw:	100W / 200W
Power Cord:	Length: 67" (1.7m)
Environmental Rating:	Projector: IP65
Driver:	Meanwell HLG
Temperature Range:	-4° F to 104°F (-20°C to 40°C)
Lamp Type:	100W / 200W LED
Rated Life:	LED: 40,000 hours
Projection Colors:	Yellow, Green, Red, Blue, Orange, White.
Line Width:	3" to 5" (76 to 127mm) Varies with projection distance
Projection Lenses:	53° (1:0.93 ratio) 73° (1:1.4 ratio) 90° (1:1.86 ratio)
Product Warranty:	One year from date of purchase
Weight	17 pounds

PROJECTORS MUST BE SECURED WITH A SAFETY CABLE

Specifications on Page 2

LED Line Projector 200W - Measurements



LED Line Projector 100W - Measurements

