

COVID-19 SIGN AUDIT

Identify Your COVID-19
Requirements from the Front
Gate to the Back Dock





Together, we can help reduce the spread of COVID-19.

Every community and business is affected by this pandemic. At this stage, businesses need to protect their employees and customers while balancing business to run as usual. A lack of planning or preparation may result in inadequate resources, and workers who might not have the proper training to perform under pandemic conditions.

With COVID-19 safety identification in the workplace, you're complying with the Occupational Safety and Health Act of 1970 "To assure safe and healthful working conditions for working men and women; by authorizing enforcement of the standards developed under the Act; by assisting and encouraging the States in their efforts to assure safe and healthful working conditions; by providing for research, information, education, and training in the field of occupational safety and health."

Many workers, even those who do not encounter infectious people in the course of their job duties, have similar exposure risks as the general American public during a pandemic. Reinforce the importance of wearing proper Personal Protective Equipment (PPE) such as face masks, practicing social distancing, adequate hand hygiene, and safety identification found inside this sign audit to do your part to reduce the spread of COVID-19.

3 EASY WAYS TO USE THIS GUIDE

To help your business navigate the new health and safety signage you may need, we've developed a checklist to help you welcome your employees and customers back safely.

With signage at the forefront of the COVID-19 battle, these pages are filled with quick and easy options to get you started with your safety identification needs.

OPTION 1



Step 1:

Walk your facility with this guide on electronic devices such as iPad, iPhone, Tablet, or Laptop.

Step 2:

As you identify each sign needed, click the highlighted part number to select the size and material options online.

Step 3:

Once selected, add to your shopping cart and checkout.

OPTION 2



Step 1:

Walk your facility with this guide on electronic devices such as iPad, iPhone, Tablet, or Laptop.

Step 2:

Fill in the fields as you select the required signs, sizes, and materials.

Step 3:

Save this PDF and email the electronic file to your dedicated customer service representative or: CustomerService@Accuform.com

OPTION 3



Step 1:

Print this guide and walk your facility.

Step 2:

Use the guide to evaluate and note the COVID-19 needs of each area in your facility. Determine the sizes, preferred materials, and quantities needed for each item.

Step 3:

Scan and email your marked-up guide to your dedicated customer service representative or: CustomerService@Accuform.com

If submitting this audit for order, please provide your PO number, shipping information, and account number. Our team will contact you to verify and finalize your order.

1 FRONT GATE

Ensure visitors, customers, and employees know your business is open and that you are doing your part to prevent the spread of COVID-19.

Identify which style you like and how many of each you need for this space.

View Over 800 COVID-19 Related Products Online



Health & Safety Signs



10" x 14" [MGNG560](#)

12" x 18" [MGNG561](#)

Size:

Material:

Qty: _____



10" x 7" [MGNG900](#)

14" x 10" [MGNG910](#)

Size:

Material:

Qty: _____



18" x 24" [MPCR541](#)

Qty: _____



PERSONALIZE IT!

Supply details when ordering

Size: _____

Material: _____

Qty: _____

Message: _____

Safety Guidelines



4 ft. x 10 ft.

Blue [FBW330](#)

Green [FBW332](#)

Color:

Qty: _____



5 ft. x 10 ft. [FBW573](#)

Qty: _____



24" x 36" [ECRT560](#)

36" x 48" [ECRT562](#)

Size:

Material:

Qty: _____



PERSONALIZE IT!

Supply details when ordering

Size: _____

Material: _____

Qty: _____

Message: _____

See Pages 30–31 for Material Descriptions.

Barricade Tape



3" x 1000 ft. [MPT301](#)

Qty: _____



3" x 1000 ft. [MPT321](#)

Qty: _____



3" x 1000 ft. [MPT317](#)

Qty: _____



PERSONALIZE It!

Supply details when ordering

Size: _____

Material: _____

Qty: _____

Message: _____

Banners



25" x 4 ft. [MBR362](#)

Qty: _____



28" x 4 ft. [MBR366](#)

Qty: _____



28" x 8 ft. [MBR772](#)

Qty: _____



PERSONALIZE It!

Supply details when ordering

Size: _____

Material: _____

Qty: _____

Message: _____

Temperature Check Signs



10" x 14" [MGNG921](#)

Material: _____

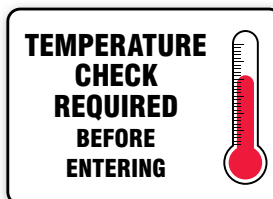
Qty: _____



10" x 14" [MGNG920](#)

Material: _____

Qty: _____



10" x 14" [MGNG515](#)

Material: _____

Qty: _____



PERSONALIZE It!

Supply details when ordering

Size: _____

Material: _____

Qty: _____

Message: _____

See Pages 30–31 for Material Descriptions.

2 PARKING LOT

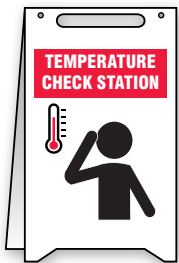
Remind everyone that parks at your facility to practice social distancing, wear a face mask, follow entrance safety rules, and to stay home if not feeling well.

Identify which style you like and how many of each you need for this space.

View Over 800 COVID-19 Related Products Online



Temperature Check Signs



20" x 12" [PFR470](#)

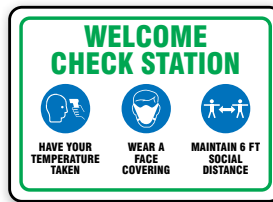
Qty: _____



10" x 14" [MGNG800](#)

Material: _____

Qty: _____



10" x 14" [MGNG925](#)

Material: _____

Qty: _____



PERSONALIZE IT!

Supply details when ordering

Size: _____

Material: _____

Qty: _____

Message: _____

Safety Guidelines



7" x 10" [MGNG904](#)

10" x 14" [MGNG914](#)

Size: _____

Material: _____

Qty: _____



4 ft. x 10 ft.

Blue [FBW330](#)

Green [FBW332](#)

Color: _____

Qty: _____



5 ft. x 10 ft. [FBW573](#)

Qty: _____



PERSONALIZE IT!

Supply details when ordering

Size: _____

Material: _____

Qty: _____

Message: _____

See Pages 30–31 for Material Descriptions.

Barricade Tape



3" x 1000 ft. [MPT307](#)

Qty: _____



3" x 1000 ft.

Orange [MPT308](#)

Yellow [MPT315](#)

Color: _____

Qty: _____



3" x 1000 ft. [MPT305](#)

Qty: _____



PERSONALIZE It!

Supply details when ordering

Size: _____

Material: _____

Qty: _____

Message: _____

Traffic Sign Curbside



18" x 12" [FRP660](#)

24" x 18" [FRP662](#)

Size: _____

Qty: _____



18" x 12" [FRP684](#)

24" x 18" [FRP686](#)

Size: _____

Qty: _____

**See additional options online.*



18" x 12" [FRP676](#)

24" x 18" [FRP678](#)

Size: _____

Qty: _____



PERSONALIZE It!

Supply details when ordering

Size: _____

Material: _____

Qty: _____

Message: _____

Barriers & Barricades



12"H [FBC212](#)
Qty: _____

**See additional options online.*



Tube Style [FBS303](#)
Qty: _____

**See additional options online.*



38"H [PRC441YL](#)
Qty: _____

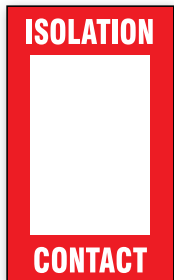
**See additional options online.*



PERSONALIZE IT!

Supply details when ordering
Size: _____
Material: _____
Qty: _____
Message: _____

Biohazard & Isolation Contact Messages



5" x 3" [MGS134](#)
Qty: _____



20" x 12" [PFR404](#)
Qty: _____



6 1/4" x 3"
100/Roll [TAR235](#)
250/Roll [TAR237](#)
Unit: _____
Qty: _____



PERSONALIZE IT!

Supply details when ordering
Size: _____
Material: _____
Qty: _____
Message: _____

See Pages 30–31 for Material Descriptions.

3 ENTRANCE

Prevent face-to-face contact, encourage others to wear face masks, and inform of social distancing guidelines in restrooms, hallways, and cafeterias.

Identify which style you like and how many of each you need for this space.

[View Over 800 COVID-19 Related Products Online](#)



Cling-Tite Door Entry



4" [LADM404](#)

6" [LADM406](#)

Size: _____

Material: _____

Qty: _____



4" [LADM412](#)

6" [LADM414](#)

Size: _____

Material: _____

Qty: _____



4" [LADM400](#)

6" [LADM402](#)

Size: _____

Material: _____

Qty: _____



PERSONALIZE It!

Supply details when ordering

Size: _____

Material: _____

Qty: _____

Message: _____

Containment Signs



7" x 10" [MBHZ130](#)

10" x 14" [MBHZ132](#)

Size: _____

Material: _____

Qty: _____



20" x 12" [PFR834](#)

Qty: _____



7" x 10" [MBHZ131](#)

10" x 14" [MBHZ133](#)

Size: _____

Material: _____

Qty: _____



PERSONALIZE It!

Supply details when ordering

Size: _____

Material: _____

Qty: _____

Message: _____

See Pages 30–31 for Material Descriptions.

Face Mask Signs



10" x 7" [MPPA830](#)

14" x 10" [MPPA832](#)

Size: _____

Material: _____

Qty: _____



10" x 7" [MPPA514](#)

14" x 10" [MPPA516](#)

Size: _____

Material: _____

Qty: _____



10" x 7" [MPPA510](#)

14" x 10" [MPPA512](#)

Size: _____

Material: _____

Qty: _____



PERSONALIZE It!

Supply details when ordering

Size: _____

Material: _____

Qty: _____

Message: _____

Social Distancing Signs



10" x 7" [MGNG901](#)

14" x 10" [MGNG905](#)

Size: _____

Material: _____

Qty: _____



10" x 7" [MGNG903](#)

14" x 10" [MGNG907](#)

Size: _____

Material: _____

Qty: _____



10" x 7" [MGNG531](#)

14" x 10" [MGNG533](#)

Size: _____

Material: _____

Qty: _____



PERSONALIZE It!

Supply details when ordering

Size: _____

Material: _____

Qty: _____

Message: _____

Health & Safety Signs



7" x 10" [MRST902](#)

10" x 14" [MRST904](#)

Size: _____

Material: _____

Qty: _____



10" x 7" [MGNG900](#)

14" x 10" [MGNG910](#)

Size: _____

Material: _____

Qty: _____



32" x 27"

English [PRF300](#)

Spanish [SHPRF300](#)

Language: _____

Qty: _____



PERSONALIZE It!

Supply details when ordering

Size: _____

Material: _____

Qty: _____

Message: _____

See Pages 30–31 for Material Descriptions.

Fold-Ups® Social Distancing



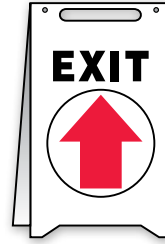
20" x 12" [PFR119](#)

Qty: _____



20" x 12" [PFR120](#)

Qty: _____



20" x 12" [PFR224](#)

Qty: _____



PERSONALIZE It!

Supply details when ordering

Size: _____

Material: _____

Qty: _____

Message: _____

Floor Sign Social Distancing



12" x 18" [PSR304](#)

Qty: _____



6" x 24" [PSR293](#)

Qty: _____



12" [MFS345](#)

17" [MFS347](#)

Size: _____

Qty: _____



PERSONALIZE It!

Supply details when ordering

Size: _____

Material: _____

Qty: _____

Message: _____

*See additional options online.

Floor Sign Face Mask



12" [MFS434](#)

17" [MFS436](#)

Size: _____

Qty: _____



12" [MFS430](#)

17" [MFS432](#)

Size: _____

Qty: _____



PERSONALIZE It!

Supply details when ordering

Size: _____

Material: _____

Qty: _____

Message: _____

See Pages 30–31 for Material Descriptions.

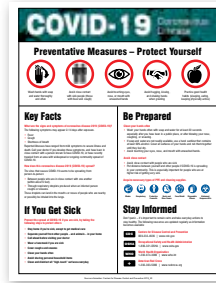
Informational Posters



22" x 17" [SP125087](#)
 28" x 22" [SP125087J](#)
 Size: _____
 Material: _____
 Qty: _____



22" x 17" [SP125302](#)
 28" x 22" [SP125302J](#)
 Size: _____
 Material: _____
 Qty: _____



22" x 17" [SP125300](#)
 28" x 22" [SP125300J](#)
 Size: _____
 Material: _____
 Qty: _____



PERSONALIZE IT!

Supply details when ordering
 Size: _____
 Material: _____
 Qty: _____
 Message: _____

ID Badges



3 3/8" x 2 1/8"
 Each [DNT901](#)
 Pkg/25 [DNT901P](#)
 Unit: _____
 Qty: _____



3 3/8" x 2 1/8"
 Each [DNT904](#)
 Pkg/25 [DNT904P](#)
 Unit: _____
 Qty: _____



3 3/8" x 2 1/8"
 Each [DNT905](#)
 Pkg/25 [DNT905P](#)
 Unit: _____
 Qty: _____



PERSONALIZE IT!

Supply details when ordering
 Size: _____
 Material: _____
 Qty: _____
 Message: _____

Countertop Protective Signs



10" x 7" [PNG104](#)
 Qty: _____



10" x 7" [PNG103](#)
 Qty: _____



10" x 7" [PNG101](#)
 Qty: _____



PERSONALIZE IT!

Supply details when ordering
 Size: _____
 Material: _____
 Qty: _____
 Message: _____

See Pages 30-31 for Material Descriptions.

Tags By-The-Roll



6 1/4" x 3"

100/Roll [TAR214](#)

250/Roll [TAR216](#)

Unit:

Qty: _____



6 1/4" x 3"

100/Roll [TAR226](#)

250/Roll [TAR228](#)

Unit:

Qty: _____



6 1/4" x 3"

100/Roll [TAR281](#)

250/Roll [TAR283](#)

Unit:

Qty: _____



PERSONALIZE IT!

Supply details when ordering

Size: _____

Material: _____

Qty: _____

Message: _____

Hours of Operation Signs



10" x 14" [MADM582](#)

14" x 20" [MADM583](#)

Size:

Material:

Qty: _____



10" x 14"

Semi-Custom [MADM472](#)

Material:

Hours: _____

Qty: _____



10" x 14" [MADM540](#)

14" x 20" [MADM542](#)

Size:

Material:

Qty: _____



PERSONALIZE IT!

Supply details when ordering

Size: _____

Material: _____

Qty: _____

Message: _____

Biohazard & Isolation Contact Messages



7" x 10" [MBHZ554](#)

10" x 14" [MBHZ553](#)

14" x 20" [MBHZ540](#)

Size:

Material:

Qty: _____



20" x 12" [PFE442](#)

Qty: _____



17" x 22" [SP125189](#)

22" x 28" [SP125189J](#)

Size:

Material:

Qty: _____



PERSONALIZE IT!

Supply details when ordering

Size: _____

Material: _____

Qty: _____

Message: _____

See Pages 30–31 for Material Descriptions.

4 OFFICE

Inform everyone that enters into the business of your COVID-19 health and safety policy with effective signs, tag, labels, posters, floor marking, barriers and barricades, and more.

Identify which style you like and how many of each you need for this space.

[View Over 800 COVID-19 Related Products Online](#)



90D Projection Signs



Back Side

90D (12" x 9")

[PSP207](#)

Qty: _____



Back Side

90D (12" x 9")

[SHPSP207](#)

Qty: _____



Back Side

90D (12" x 9")

[PSP205](#)

Qty: _____



PERSONALIZE IT!

Supply details when ordering

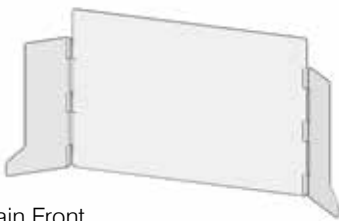
Size: _____

Material: _____

Qty: _____

Message: _____

Accu-Shield™ SG Clear Barrier Panels



Plain Front

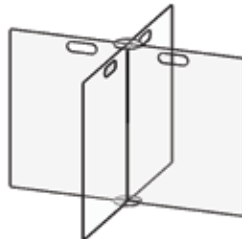
24" x 36" [PRL300](#)

24" x 48" [PRL301](#)

Size: _____

Qty: _____

**See additional options online.*

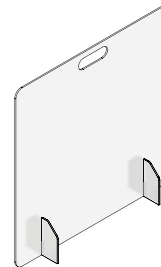


24" x 36" [PRL400](#)

24" x 48" [PRL401](#)

Size: _____

Qty: _____



Plain Front

24" x 24" [PRL100](#)

24" x 36" [PRL101](#)

Size: _____

Qty: _____

**See additional options online.*



PERSONALIZE IT!

Supply details when ordering

Size: _____

Material: _____

Qty: _____

Message: _____

See Pages 30–31 for Material Descriptions.

Face Mask Signs



10" x 7" [MPPA830](#)

14" x 10" [MPPA832](#)

Size:

Material:

Qty: _____



10" x 7" [MPPA501](#)

14" x 10" [MPPA503](#)

Size:

Material:

Qty: _____



10" x 7" [MPPA510](#)

14" x 10" [MPPA512](#)

Size:

Material:

Qty: _____



PERSONALIZE IT!

Supply details when ordering

Size: _____

Material: _____

Qty: _____

Message: _____

Social Distancing Signs



10" x 7" [MGNG901](#)

14" x 10" [MGNG905](#)

Size:

Material:

Qty: _____



10" x 7" [MGNF547](#)

14" x 10" [MGNF549](#)

Size:

Material:

Qty: _____



7" x 10" [MGNG535](#)

10" x 14" [MGNG537](#)

Size:

Material:

Qty: _____



PERSONALIZE IT!

Supply details when ordering

Size: _____

Material: _____

Qty: _____

Message: _____

Health & Safety Signs



7" x 10" [MRST902](#)

10" x 14" [MRST904](#)

Size:

Material:

Qty: _____



10" x 7" [MGNG900](#)

14" x 10" [MGNG910](#)

Size:

Material:

Qty: _____



32" x 27"

English [PRF300](#)

Spanish [SHPRF300](#)

Language:

Qty: _____



PERSONALIZE IT!

Supply details when ordering

Size: _____

Material: _____

Qty: _____

Message: _____

See Pages 30–31 for Material Descriptions.

Hand Washing Signs



14" x 10" [MTDX819](#)

Material: _____

Qty: _____



7" x 10" [MRST591](#)

10" x 14" [MRST593](#)

Size: _____

Material: _____

Qty: _____



10" x 7" [MRST570](#)

14" x 10" [MRST540](#)

Size: _____

Material: _____

Qty: _____



PERSONALIZE IT!

Supply details when ordering

Size: _____

Material: _____

Qty: _____

Message: _____

Floor Sign Directional



12" [MFS451](#)

17" [MFS453](#)

Size: _____

Qty: _____



12" [MFS470](#)

17" [MFS472](#)

Size: _____

Qty: _____



12" [MFS475](#)

17" [MFS477](#)

Size: _____

Qty: _____



PERSONALIZE IT!

Supply details when ordering

Size: _____

Material: _____

Qty: _____

Message: _____

Social Distancing Stickers



4" [LADM404](#)

6" [LADM406](#)

Size: _____

Material: _____

Qty: _____



2.25" [LHTL273](#)

Qty: _____



2.25" [LHTL271](#)

Qty: _____



PERSONALIZE IT!

Supply details when ordering

Size: _____

Material: _____

Qty: _____

Message: _____

See Pages 30–31 for Material Descriptions.

Fold-Ups® Social Distancing



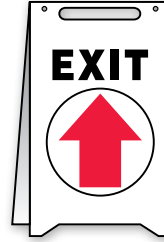
20" x 12" [PFR119](#)

Qty: _____



20" x 12" [PFR120](#)

Qty: _____



20" x 12" [PFR224](#)

Qty: _____



PERSONALIZE IT!

Supply details when ordering

Size: _____

Material: _____

Qty: _____

Message: _____

Floor Sign Social Distancing



12" [MFS345](#)

17" [MFS347](#)

Size: _____

Qty: _____



12" [MFS480](#)

17" [MFS481](#)

Size: _____

Qty: _____



12" [MFS385](#)

17" [MFS387](#)

Size: _____

Qty: _____



PERSONALIZE IT!

Supply details when ordering

Size: _____

Material: _____

Qty: _____

Message: _____

Floor Sign Face Mask



12" [MFS434](#)

17" [MFS436](#)

Size: _____

Qty: _____



12" [MFS430](#)

17" [MFS432](#)

Size: _____

Qty: _____



PERSONALIZE IT!

Supply details when ordering

Size: _____

Material: _____

Qty: _____

Message: _____

Informational Posters



22" x 17" [SP124486](#)
28" x 22" [SP124486J](#)

Size: _____
Material: _____
Qty: _____



22" x 17" [SP125302](#)
28" x 22" [SP125302J](#)

Size: _____
Material: _____
Qty: _____



22" x 17" [SP125300](#)
28" x 22" [SP125300J](#)

Size: _____
Material: _____
Qty: _____



PERSONALIZE It!

Supply details when ordering
Size: _____
Material: _____
Qty: _____
Message: _____

ID Badges



3 3/8" x 2 1/8"
Each [DNT901](#)
Pkg/25 [DNT901P](#)

Unit: _____
Qty: _____



3 3/8" x 2 1/8"
Each [DNT902](#)
Pkg/25 [DNT902P](#)

Unit: _____
Qty: _____



3 3/8" x 2 1/8"
Each [DNT905](#)
Pkg/25 [DNT905P](#)

Unit: _____
Qty: _____



PERSONALIZE It!

Supply details when ordering
Size: _____
Material: _____
Qty: _____
Message: _____

Disinfect & Decontaminate Signs



7" x 10" [MBHZ134](#)
10" x 14" [MBHZ136](#)

Size: _____
Material: _____
Qty: _____



7" x 10" [MBHZ814](#)
10" x 14" [MBHZ816](#)

Size: _____
Material: _____
Qty: _____



20" x 12" [PFR163](#)

Qty: _____



PERSONALIZE It!

Supply details when ordering
Size: _____
Material: _____
Qty: _____
Message: _____

See Pages 30–31 for Material Descriptions.

Tri-Fold Aisle



Panel Size: 48" x 20"

[PFE360](#)

Qty: _____



Panel Size: 48" x 20"

[PFE362](#)

Qty: _____



PERSONALIZE IT!

Supply details when ordering

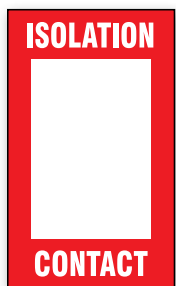
Size: _____

Material: _____

Qty: _____

Message: _____

Biohazard & Isolation Contact Messages



5" x 3" [MGS134](#)

Qty: _____



20" x 12" [PFE442](#)

Qty: _____



20" x 15" [ZLT170](#)

Qty: _____



PERSONALIZE IT!

Supply details when ordering

Size: _____

Material: _____

Qty: _____

Message: _____

5 PRODUCTION

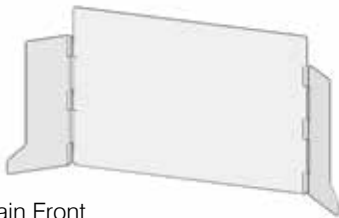
Protect workers while working closely with others with tabletop or floor length mobile partitions, social distancing messages, disinfection stations, sanitizing reminders, and PPE dispensers.

Identify which style you like and how many of each you need for this space.

View Over 800 COVID-19 Related Products Online



Accu-Shield™ SG Clear Barrier Panels



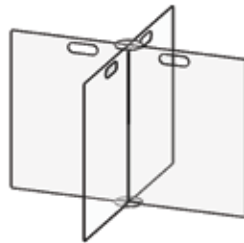
Plain Front

24" x 36" [PRL300](#)

24" x 48" [PRL301](#)

Size:

Qty: _____



24" x 36" [PRL400](#)

24" x 48" [PRL401](#)

Size:

Qty: _____



30" x 30" [PRL600](#)

30" x 36" [PRL601](#)

Size:

Qty: _____



PERSONALIZE IT!

Supply details when ordering

Size: _____

Material: _____

Qty: _____

Message: _____

*See additional options online.

ID Badges



3 3/8" x 2 1/8"

Each [DNT906](#)

Pkg/25 [DNT906P](#)

Unit:

Qty: _____



3 3/8" x 2 1/8"

Each [DNT904](#)

Pkg/25 [DNT904P](#)

Unit:

Qty: _____



3 3/8" x 2 1/8"

Each [DNT905](#)

Pkg/25 [DNT905P](#)

Unit:

Qty: _____



PERSONALIZE IT!

Supply details when ordering

Size: _____

Material: _____

Qty: _____

Message: _____

See Pages 30–31 for Material Descriptions.

Social Distancing Signs



10" x 7" [MGNG901](#)

14" x 10" [MGNG905](#)

Size: _____

Material: _____

Qty: _____



10" x 7" [MGNF547](#)

14" x 10" [MGNF549](#)

Size: _____

Material: _____

Qty: _____



7" x 10" [MGNG535](#)

10" x 14" [MGNG537](#)

Size: _____

Material: _____

Qty: _____



PERSONALIZE IT!

Supply details when ordering

Size: _____

Material: _____

Qty: _____

Message: _____

Health & Safety Signs



10" x 7" [MRST587](#)

14" x 10" [MRST589](#)

Size: _____

Material: _____

Qty: _____



10" x 14" [MGNG566](#)

12" x 18" [MGNG567](#)

Size: _____

Material: _____

Qty: _____



10" x 14" [MGNG560](#)

12" x 18" [MGNG561](#)

Size: _____

Material: _____

Qty: _____



PERSONALIZE IT!

Supply details when ordering

Size: _____

Material: _____

Qty: _____

Message: _____

Floor Sign Directional



12" [MFS465](#)

17" [MFS467](#)

Size: _____

Qty: _____



6" x 24"

English [PSR101](#)

Spanish [SBPSR101](#)

Language: _____

Qty: _____



12" [MFS480](#)

17" [MFS481](#)

Size: _____

Qty: _____



PERSONALIZE IT!

Supply details when ordering

Size: _____

Material: _____

Qty: _____

Message: _____

See Pages 30–31 for Material Descriptions.

Safety Guidelines



24" x 36" [ECRT560](#)

36" x 48" [ECRT562](#)

Size: _____

Material: _____

Qty: _____



4 ft. x 10 ft.

Blue [FBW330](#)

Green [FBW332](#)

Color: _____

Qty: _____



5 ft. x 10 ft. [FBW577](#)

Qty: _____



PERSONALIZE IT!

Supply details when ordering

Size: _____

Material: _____

Qty: _____

Message: _____

Barricade Tape



3" x 1000 ft. [MPT307](#)

Qty: _____



3" x 1000 ft. [MPT321](#)

Qty: _____



3" x 1000 ft. [MPT302](#)

Qty: _____



PERSONALIZE IT!

Supply details when ordering

Size: _____

Material: _____

Qty: _____

Message: _____

Social Distancing Stickers



2.25" [LHTL270](#)

Qty: _____



2.25" [LHTL273](#)

Qty: _____



2.25" [LHTL271](#)

Qty: _____



PERSONALIZE IT!

Supply details when ordering

Size: _____

Material: _____

Qty: _____

Message: _____

Fold-Ups® Social Distancing



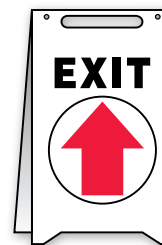
20" x 12" [PFR119](#)

Qty: _____



20" x 12" [PFR120](#)

Qty: _____



20" x 12" [PFR224](#)

Qty: _____



PERSONALIZE IT!

Supply details when ordering

Size: _____

Material: _____

Qty: _____

Message: _____

See Pages 30–31 for Material Descriptions.

Floor Sign Social Distancing



12" [MFS420](#)

17" [MFS420](#)

Size: _____

Qty: _____

*See additional options online.



12" [MFS389](#)

17" [MFS391](#)

Size: _____

Qty: _____



12" [MFS354](#)

17" [MFS356](#)

Size: _____

Qty: _____



PERSONALIZE IT!

Supply details when ordering

Size: _____

Material: _____

Qty: _____

Message: _____

Floor Sign Face Mask



12" [MFS434](#)

17" [MFS436](#)

Size: _____

Qty: _____



12" [MFS430](#)

17" [MFS432](#)

Size: _____

Qty: _____



PERSONALIZE IT!

Supply details when ordering

Size: _____

Material: _____

Qty: _____

Message: _____

Informational Posters



22" x 17" [SP125087](#)

28" x 22" [SP125087J](#)

Size: _____

Material: _____

Qty: _____



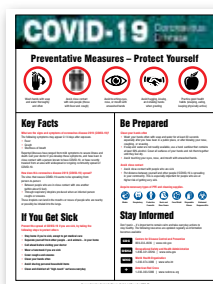
22" x 17" [SP125302](#)

28" x 22" [SP125302J](#)

Size: _____

Material: _____

Qty: _____



22" x 17" [SP125300](#)

28" x 22" [SP125300J](#)

Size: _____

Material: _____

Qty: _____



PERSONALIZE IT!

Supply details when ordering

Size: _____

Material: _____

Qty: _____

Message: _____

See Pages 30–31 for Material Descriptions.

Barriers & Barricades



Belt Tape: 2" x 13 ft.

[PRC218BK](#)

Qty: _____



78" x 50" [PRD604](#)

Qty: _____



41"H

Each [PRC745](#)

Pkg/6 [PRC756](#)

Unit:

Qty: _____

**See additional options online.*



PERSONALIZE It!

Supply details when ordering

Size: _____

Material: _____

Qty: _____

Message: _____

Disinfect & Decontaminate Signs



7" x 10" [MHSK860](#)

10" x 14" [MHSK862](#)

Size:

Material:

Qty: _____



7" x 10" [MBHZ814](#)

10" x 14" [MBHZ816](#)

Size:

Material:

Qty: _____



7" x 10" [MBHZ810](#)

10" x 14" [MBHZ812](#)

Size:

Material:

Qty: _____



PERSONALIZE It!

Supply details when ordering

Size: _____

Material: _____

Qty: _____

Message: _____

Tags By-The-Roll



6 1/4" x 3"

100/Roll [TAR720](#)

250/Roll [TAR726](#)

Unit:

Qty: _____



6 1/4" x 3"

100/Roll [TAR284](#)

250/Roll [TAR286](#)

Unit:

Qty: _____



6 1/4" x 3"

100/Roll [TAR281](#)

250/Roll [TAR283](#)

Unit:

Qty: _____



PERSONALIZE It!

Supply details when ordering

Size: _____

Material: _____

Qty: _____

Message: _____

See Pages 30–31 for Material Descriptions.

Tri-Fold Aisle



Panel Size: 48" x 20"

[PFE360](#)

Qty: _____



Panel Size: 48" x 20"

[PFE362](#)

Qty: _____



PERSONALIZE It!

Supply details when ordering

Size: _____

Material: _____

Qty: _____

Message: _____

90D Projection Signs



Back Side

90D (12" x 9")

[PSP207](#)

Qty: _____



Back Side

90D (12" x 9")

[SHPS207](#)

Qty: _____



Back Side

90D (12" x 9")

English [PSP209](#)

Spanish [SHPS209](#)

Language: _____

Qty: _____



PERSONALIZE It!

Supply details when ordering

Size: _____

Material: _____

Qty: _____

Message: _____

LED Sign Projectors



[VPL946](#)

Qty: _____



English [VPL901](#)

French [FRVPL901](#)

Language: _____

Qty: _____



[VPL945](#)

Qty: _____



PERSONALIZE It!

Supply details when ordering

Size: _____

Material: _____

Qty: _____

Message: _____

See Pages 30–31 for Material Descriptions.

6 BACK DOCK

Instruct vendors of new safety requirements, receiving hours, updated facility-specific policy, and essential health requirements to eliminate the spread of germs.

Identify which style you like and how many of each you need for this space.

[View Over 800 COVID-19 Related Products Online](#)



Face Mask Signs



10" x 7" [MPPA830](#)

14" x 10" [MPPA832](#)

Size:

Material:

Qty: _____



10" x 7" [MPPA514](#)

14" x 10" [MPPA516](#)

Size:

Material:

Qty: _____



10" x 7" [MPPA510](#)

14" x 10" [MPPA512](#)

Size:

Material:

Qty: _____



PERSONALIZE IT!

Supply details when ordering

Size: _____

Material: _____

Qty: _____

Message: _____

Social Distancing Signs



10" x 7" [MGNG901](#)

14" x 10" [MGNG905](#)

Size:

Material:

Qty: _____



10" x 7" [MGNF547](#)

14" x 10" [MGNF549](#)

Size:

Material:

Qty: _____



7" x 10" [MGNG535](#)

14" x 10" [MGNG537](#)

Size:

Material:

Qty: _____



PERSONALIZE IT!

Supply details when ordering

Size: _____

Material: _____

Qty: _____

Message: _____

See Pages 30–31 for Material Descriptions.

Health & Safety Signs



7" x 10" [MHSK939](#)

10" x 14" [MHSK950](#)

Size: _____

Material: _____

Qty: _____

**See additional options online.*



7" x 10" [MHSK926](#)

10" x 14" [MHSK918](#)

Size: _____

Material: _____

Qty: _____



10" x 14" [MHSK917](#)

Material: _____

Qty: _____



PERSONALIZE IT!

Supply details when ordering

Size: _____

Material: _____

Qty: _____

Message: _____

Safety Guidelines



5 ft. x 10 ft. [FBW573](#)

Qty: _____



4 ft. x 10 ft. Green [FBW332](#)

4 ft. x 10 ft. Blue [FBW330](#)

Color: _____

Qty: _____



5 ft. x 10 ft. [FBW577](#)

Qty: _____



PERSONALIZE IT!

Supply details when ordering

Size: _____

Material: _____

Qty: _____

Message: _____

Traffic Sign Curbside



18" x 12" [FRP695](#)

24" x 18" [FRP697](#)

Size: _____

Qty: _____



12" x 18"

Semi-Custom [FRP627](#)

Wording: _____

Qty: _____



18" x 24" [MPCR541](#)

Qty: _____



PERSONALIZE IT!

Supply details when ordering

Size: _____

Material: _____

Qty: _____

Message: _____

Fold-Ups® Social Distancing



20" x 12" [PFR119](#)

Qty: _____



20" x 12" [MF101](#)

Qty: _____



20" x 12" [PFR476](#)

Qty: _____



PERSONALIZE IT!

Supply details when ordering

Size: _____

Material: _____

Qty: _____

Message: _____

See Pages 30–31 for Material Descriptions.

Hours of Operation Signs



10" x 14" Semi-Custom [MVHR558](#)
 14" x 20" Semi-Custom [MVHR563](#)
 Size: _____
 Material: _____
 Hours: _____
 Qty: _____



10" x 14" [MVHR551](#)
 14" x 20" [MVHR554](#)
 Size: _____
 Material: _____
 Qty: _____



10" x 14" [MADM540](#)
 14" x 20" [MADM542](#)
 Size: _____
 Material: _____
 Qty: _____



PERSONALIZE IT!

Supply details when ordering
 Size: _____
 Material: _____
 Qty: _____
 Message: _____

90D Projection Signs



90D (8" x 8")
[PSP240](#)
 Qty: _____



90D (12" x 9")
 English [PSP207](#) Spanish [SHPSP207](#)
 Language: _____
 Qty: _____



90D (12" x 9")
 English [PSP209](#) Spanish [SHPSP209](#)
 Language: _____
 Qty: _____



PERSONALIZE IT!

Supply details when ordering
 Size: _____
 Material: _____
 Qty: _____
 Message: _____

Cling-Tite Door Entry



4" [LADM404](#) 6" [LADM406](#)
 Size: _____
 Material: _____
 Qty: _____



4" [LADM412](#) 6" [LADM414](#)
 Size: _____
 Material: _____
 Qty: _____



4" [LADM408](#) 6" [LADM410](#)
 Size: _____
 Material: _____
 Qty: _____



PERSONALIZE IT!

Supply details when ordering
 Size: _____
 Material: _____
 Qty: _____
 Message: _____

LED Sign Projectors



[VPL940](#)
 Qty: _____



[VPL942](#)
 Qty: _____



[VPL944](#)
 Qty: _____

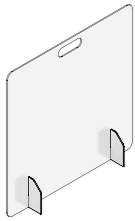


PERSONALIZE IT!

Supply details when ordering
 Size: _____
 Material: _____
 Qty: _____
 Message: _____

See Pages 30–31 for Material Descriptions.

Accu-Shield™ SG Clear Barrier Panels



Plain Front

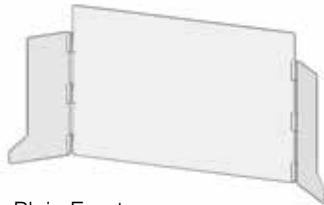
24" x 24" [PRL100](#)

24" x 36" [PRL101](#)

Size: _____

Qty: _____

**See additional options online.*



Plain Front

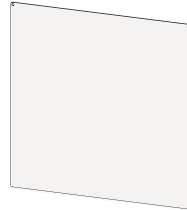
24" x 36" [PRL300](#)

24" x 48" [PRL301](#)

Size: _____

Qty: _____

**See additional options online.*



30" x 30" [PRL600](#)

30" x 36" [PRL601](#)

Size: _____

Qty: _____



PERSONALIZE It!

Supply details when ordering

Size: _____

Material: _____

Qty: _____

Message: _____

Barriers & Barricades



Belt Tape: 2" x 8 ft.

[PRB842YL](#)

Qty: _____

**See additional options online.*



78" x 50" [PRD604](#)

Qty: _____



Belt Tape: 2"x 10 ft.

[PRT202](#)

Qty: _____

**See additional options online.*



PERSONALIZE It!

Supply details when ordering

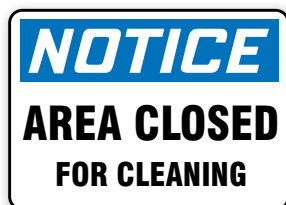
Size: _____

Material: _____

Qty: _____

Message: _____

Disinfect & Decontaminate Signs



7" x 10" [MHSK860](#)

10" x 14" [MHSK862](#)

Size: _____

Material: _____

Qty: _____



7" x 10" [MBHZ814](#)

10" x 14" [MBHZ816](#)

Size: _____

Material: _____

Qty: _____



7" x 10" [MBHZ810](#)

10" x 14" [MBHZ812](#)

Size: _____

Material: _____

Qty: _____



PERSONALIZE It!

Supply details when ordering

Size: _____

Material: _____

Qty: _____

Message: _____

See Pages 30–31 for Material Descriptions.

MATERIALS

To provide a solution for your exact needs, we offer a comprehensive selection of materials designed to meet virtually every application and environmental demand from the parking lot to aisle ways, we've got you covered.

Signs

Adhesive Vinyl (VS) – Flexible vinyl with printed surface. Mount with permanent acrylic adhesive back with peel off liner. Ideal for indoor and protected outdoor placement.

Plastic (VP) – Printed surface has clear UV Duck Armor™ protective overcoat. 50% recycled content plastic has UV inhibitors. Rounded corners with mounting holes. Ideal for indoor and sheltered outdoor locations.

Aluminum (VA) – Rigid metal strength, without rust. Print is protected by UV Duck Armor™ overcoat to withstand washdown, abrasion, and chemical splash. Rounded corners with mounting holes. Durable for tough indoors and harsh outdoor environments.

Reflective Aluminum (RA) – Engineer-grade prismatic reflective thick aluminum provides added visibility in lowlight conditions. Image has clear overcoat protection by Duck Armor™. Rounded corners with center post-mount holes. Durable for outdoor location placement.

Counter Top Plastic – Rigid plastic sign has base bent at an angle to stand upright by itself on countertop, reception desk, or other areas to be readily seen and understood.

Dura-Plastic (XT) – High durability plastic with high-impact resistance for outdoor applications and tough environments. Image is clear-coat protected by Duck Armor™. Rounded corners with mounting holes.

Magnetic (MG) – Flexible magnetic vinyl can place, lift, and replace on most steel or ferrous metal.

Rope Sign – Plastic sign with cutout to loop barrier rope through to hang.

Lite-Corrugate Plastic – Light duty plastic with a fluted core. Ideal for attaching to any location or set out into ground with step-stake (not included).

90D Projection Sign – Durable thick plastic with a flange edge and mounting holes. 90D signs project from the wall at 90 degrees and can be viewed from either side, easily mounted with Tapes and Screws, not included

Floor Marking

Slip-Gard™ Floor Sign – Made of dual-layer tough construction. The underlayer is adhesive vinyl, and the sign is subsurface print. Non-slip, pebble-textured has an over-laminate top surface to provide added durability, protecting the graphics and message from heavy pedestrian traffic. Strong, permanent acrylic adhesive underside has a peel-off liner and adheres firmly to smooth, clean, dry surfaces.

Stand-Up Floor Signs

Fold-Ups® – High-impact plastic panels stand upright with bold message and symbol on both sides. Quick, easy set-up, transport with cut-out top handle, and folds flat for storage.

Triple-Sided Fold-Ups® – Lightweight corrugated plastic stand-up floor sign has printed messages on three sides. Set up and secure with insert tabs. Store flat when not in use.



Tags & Tapes

Tags By-The-Roll – End-to-end quantity of thin-mil poly tags connected, spooled, and stored within a handy portable box. Pull tag out to dispense out, tear at perforations to use.

Barricade Tapes – Lightweight, thin poly plastic non-adhesive tape is durable for inside and outside use. Message is repeated continuously along the length of the tape roll. Easily cut and secure with adhesive tape, nail, staples, or tie-off.

Labels

Hard Hat Stickers – Stickers are flexible to conform to the hard hat curvature – or adhere to machinery, toolboxes, or other equipment.

Adhesive Vinyl – Flexible vinyl with printed surface and a permanent acrylic adhesive back with peel-off liner.

Cling-Tite – Clear static poly, adheres to surface, yet can peel off to remove, and replace.

Paper Labels – Printed surface on flexible paper stock with adhesive back with peel-off liner.

Badges – Poly-gloss, printed plastic card with slot hole top. Clip included.

Posters & Banners

SafetyPoster™ Coated Paper Posters – Print on semi-gloss finish on coated side of heavy stock that is sturdier than writing paper. Uncoated backside allows mounting with adhesive.

SafetyPoster™ Laminated Plastic Posters – Printed poster is laminated on both sides with clear laminate for added durability. Protective surface is cleanable with easy wipe off.

Poly Banner – Durable, reinforced, flexible poly with finished edges and metal grommets for mounting.

Mesh Banner – Poly-mesh texture is porous for wind-resistance to allow flow through the air. Tight mesh pattern provides visibility of printed surface. Has finished edges with metal grommets for mounting.



CHECKLIST

Double check you've got them all.

- | | |
|---|--|
| <input type="checkbox"/> 90D Projection Signs | <input type="checkbox"/> Fold-Ups® Social Distancing |
| <input type="checkbox"/> Accu-Shield™ SG Clear Barrier Panels | <input type="checkbox"/> Hand Washing Signs |
| <input type="checkbox"/> Banners | <input type="checkbox"/> Health & Safety Signs |
| <input type="checkbox"/> Barricade Tape | <input type="checkbox"/> Hours of Operation Signs |
| <input type="checkbox"/> Barriers & Barricades | <input type="checkbox"/> ID Badges |
| <input type="checkbox"/> Biohazard & Isolation Contact Messages | <input type="checkbox"/> Informational Posters |
| <input type="checkbox"/> Checkout Signs | <input type="checkbox"/> LED Sign Projectors |
| <input type="checkbox"/> Cling-Tite Door Entry | <input type="checkbox"/> Safety Guidelines |
| <input type="checkbox"/> Containment Signs | <input type="checkbox"/> Social Distancing Signs |
| <input type="checkbox"/> Countertop Protective Signs | <input type="checkbox"/> Social Distancing Stickers |
| <input type="checkbox"/> Disinfect & Decontaminate Signs | <input type="checkbox"/> Tags By-The-Roll |
| <input type="checkbox"/> Face Mask Signs | <input type="checkbox"/> Temperature Check Signs |
| <input type="checkbox"/> Floor Sign Directional | <input type="checkbox"/> Traffic Sign Curbside |
| <input type="checkbox"/> Floor Sign Face Mask | <input type="checkbox"/> Tri-Fold Aisle |
| <input type="checkbox"/> Floor Sign Social Distancing | |

This Facility Audit was Prepared for:

Company Name: _____

Contact Name: _____

Phone: _____

Email: _____

Manufacturer’s Representative:

Phone: _____

Email: _____

Date Completed: _____

Date Quote Requested By: _____

Additional Notes:

PERSONALIZE IT!

Customizing your safety signage keeps your company top of mind with your employees and customers while reinforcing your commitment to safety.

Whether you need a custom message, a personalized design with original imagery and logos, or require a unique shape or size, our “Yes, We Can!” approach will shine through when we create the right sign, label, tag, or floor marking solution for you.

Custom Safety Identification:

- ☒ No Set-Up Fees
- ☒ Unlimited Design Options
- ☒ No Minimums
- ☒ Language Translations Available



[Click to learn more](#) about over 800 stock and endless custom solutions to help prevent the spread of COVID-19 or contact your sales representative today.



COVID19SA | © 2020 Accuform. All rights reserved.